



Factory Software and Firmware Upgrade Procedure for Dell® PTM

User Manual

Rev 1.1

www.mellanox.com

NOTE:

THIS HARDWARE, SOFTWARE OR TEST SUITE PRODUCT ("PRODUCT(S)") AND ITS RELATED DOCUMENTATION ARE PROVIDED BY MELLANOX TECHNOLOGIES "AS-IS" WITH ALL FAULTS OF ANY KIND AND SOLELY FOR THE PURPOSE OF AIDING THE CUSTOMER IN TESTING APPLICATIONS THAT USE THE PRODUCTS IN DESIGNATED SOLUTIONS. THE CUSTOMER'S MANUFACTURING TEST ENVIRONMENT HAS NOT MET THE STANDARDS SET BY MELLANOX TECHNOLOGIES TO FULLY QUALIFY THE PRODUCT(S) AND/OR THE SYSTEM USING IT. THEREFORE, MELLANOX TECHNOLOGIES CANNOT AND DOES NOT GUARANTEE OR WARRANT THAT THE PRODUCTS WILL OPERATE WITH THE HIGHEST QUALITY. ANY EXPRESS OR IMPLIED WARRANTIES, INCLUDING, BUT NOT LIMITED TO, THE IMPLIED WARRANTIES OF MERCHANTABILITY, FITNESS FOR A PARTICULAR PURPOSE AND NONINFRINGEMENT ARE DISCLAIMED. IN NO EVENT SHALL MELLANOX BE LIABLE TO CUSTOMER OR ANY THIRD PARTIES FOR ANY DIRECT, INDIRECT, SPECIAL, EXEMPLARY, OR CONSEQUENTIAL DAMAGES OF ANY KIND (INCLUDING, BUT NOT LIMITED TO, PAYMENT FOR PROCUREMENT OF SUBSTITUTE GOODS OR SERVICES; LOSS OF USE, DATA, OR PROFITS; OR BUSINESS INTERRUPTION) HOWEVER CAUSED AND ON ANY THEORY OF LIABILITY, WHETHER IN CONTRACT, STRICT LIABILITY, OR TORT (INCLUDING NEGLIGENCE OR OTHERWISE) ARISING IN ANY WAY FROM THE USE OF THE PRODUCT(S) AND RELATED DOCUMENTATION EVEN IF ADVISED OF THE POSSIBILITY OF SUCH DAMAGE.



Mellanox Technologies
350 Oakmead Parkway Suite 100
Sunnyvale, CA 94085
U.S.A.
www.mellanox.com
Tel: (408) 970-3400
Fax: (408) 970-3403

Mellanox Technologies, Ltd.
Beit Mellanox
PO Box 586 Yokneam 20692
Israel
www.mellanox.com
Tel: +972 (0)74 723 7200
Fax: +972 (0)4 959 3245

© Copyright 2013. Mellanox Technologies. All Rights Reserved.

Mellanox®, Mellanox logo, BridgeX®, ConnectX®, CORE-Direct®, InfiniBridge®, InfiniHost®, InfiniScale®, PhyX®, SwitchX®, Virtual Protocol Interconnect® and Voltaire® are registered trademarks of Mellanox Technologies, Ltd.

Connect-IB™, FabricIT™, MLNX-OS™, MetroX™, ScalableHPC™, Unbreakable-Link™, UFM™ and Unified Fabric Manager™ are trademarks of Mellanox Technologies, Ltd.

All other trademarks are property of their respective owners.

Contents

1	Introduction	5
2	Connecting to the PTM using an SSH Client	5
3	Management CPU Software and Firmware Update	8

List of Figures

Figure 1: Setup Menu	5
Figure 2: Compression Setting	6
Figure 3: Set Emulation Type and Backspace Character	6
Figure 4: getioinfo Output	7
Figure 5: pfw File Transfer.....	8

1 Introduction

This manual explains the use of the embedded software management of the Dell PTM. It explains how to connect to the PTM and to the CMC, and how to update the module's device SW and FW using a single ".pfw" file.



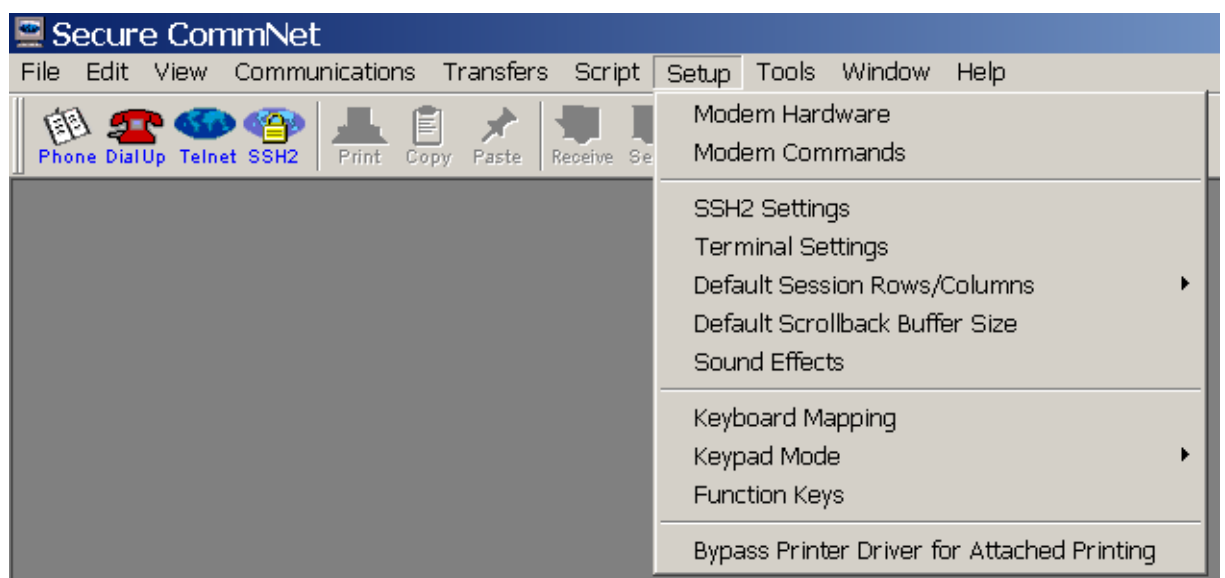
NOTE: This procedure requires bootloader version 1.0.034 or above.

2 Connecting to the PTM using an SSH Client

You will need an SSH client that supports ZModem file transfer. This Example uses Secure CommNet v2.35.

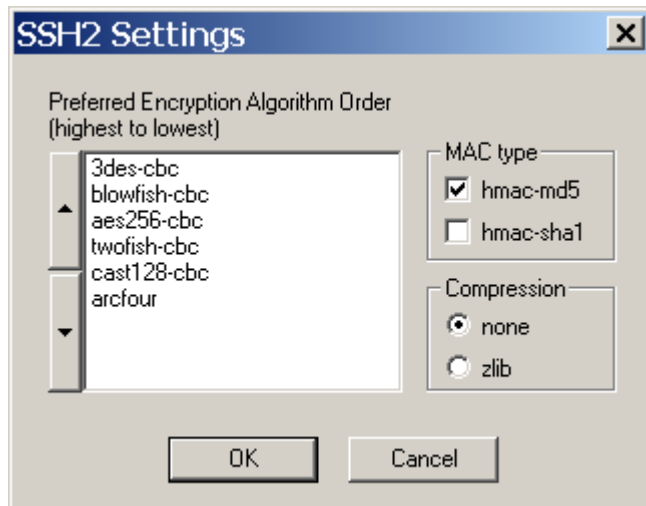
After you download this software, there is some initial configuration that is necessary before you start using the program.

Figure 1: Setup Menu



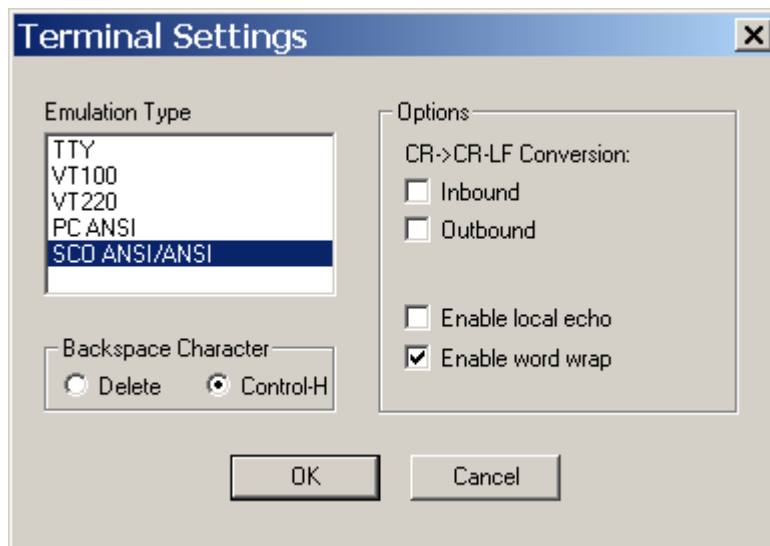
Step 1: Go to Setup => SSH2 Settings, and set the compression to none. See Figure 2

Figure 2: Compression Setting



Step 2: Go to Setup => Terminal Settings and set Emulation type => SCOANSI/ANSI, and Backspace Character => Control-H.

Figure 3: Set Emulation Type and Backspace Character



Step 3: Go to Communications => Open SSH2 connection. This will open the SSH2 Connection dialog box.

Step 4: Fill in the hostname or IP address of the PTM, the user name and password. Then click OK to open the SSH connection. The prompt will be a \$.

Step 5: List the devices in the chassis. Run the command:

```
$ racadm getioinfo
```



NOTE: The Pass-Through module is identified by 10GE PT KR.

Figure 4: getioinfo Output

```
Secure CommNet - [10.7.9.200]
File Edit View Communications Transfers Script Setup Tools Window Help
Phone DialUp Telnet SSH2 Print Copy Paste Receive Send FTP Tunnel DOS
Trying 10.7.9.200...Connection established
Authenticating with server. Please wait...Authentication successful

Welcome to the CMC firmware version 3.00.X13.201005121602

$ racadm getioinfo
<IO>      <Name>                                <Type>          <POST>          <Power>
<Role>
Switch-1  Dell Ethernet Pass-Through          Gigabit Ethernet OK              ON
Master
Switch-2  10GE PT KR                             10 Gbe XAUI+KR  OK              ON
Master
Switch-3  N/A                                     None            N/A             N/A
N/A
Switch-4  N/A                                     None            N/A             N/A
N/A
Switch-5  N/A                                     None            N/A             N/A
N/A
Switch-6  N/A                                     None            N/A             N/A
N/A
$
```

00:00:35 | SSH2, ALG:3des-cbc MAC:hmac-md5 COMP:none | 30x84 | SCO ANSI/ANSI | [GO] [RE]

3 Management CPU Software and Firmware Update

Step 1: From the CMC command line, connect to the PTM command line interface (CLI).
Enter:



NOTE: At least 20 seconds must have passed since the last power cycle of the Pass-Through module before running the following connect command.

```
$ connect switch-<n>
```

Where <n> is the number of the switch -- 2 in our example.

The prompt should change to #.

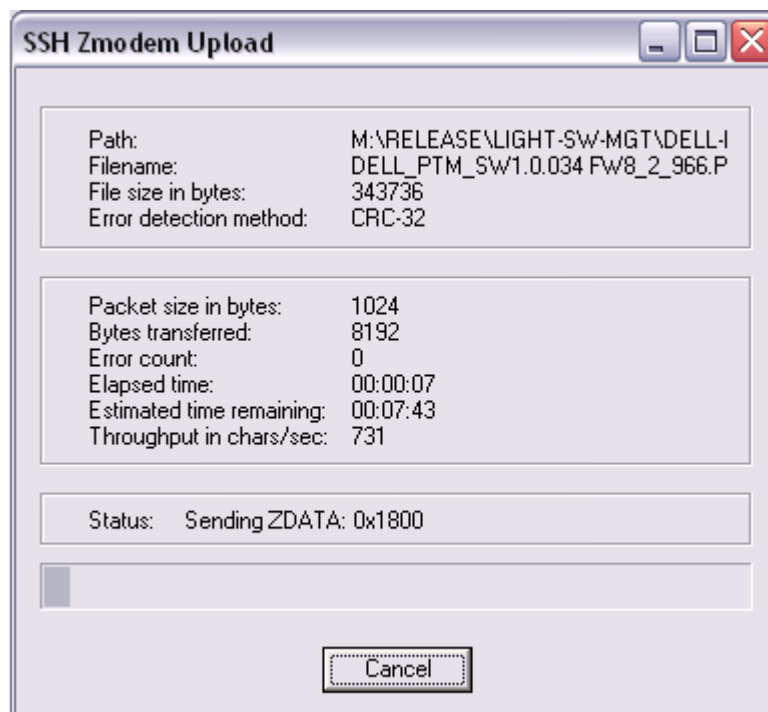
Step 2: To start the upgrade process, run the command:

```
# copy image from-file
```

The system will now wait for a ".pfw" file to be transferred from the SSH client.

Step 3: In your SSH client, initiate file transfer by pulling down the Transfers menu and clicking Send Files. Provide the path to the ".pfw" file and send it.

Figure 5: pfw File Transfer



After loading the .pfw file, both the software and firmware will be programmed onto the Pass-Through module.



NOTE: The update process takes a few minutes.

At the end, the following message will be displayed at the prompt:

```
# Received update image successfully. Changes will take effect after next reboot.
```

Step 4: Exit the PTM command line to the CMC command line. Run:

```
# exit
```

Step 5: Power cycle the PTM for the firmware to take effect. From the CMC command line type the following command:

```
$ racadm chassisaction -m switch-<n> powercycle
```

Step 6: Wait for 20 seconds, and then connect to the PTM. Run:

```
$ connect switch-<n>
```

You will be able to view the progress of the SW/FW update.

Step 7: At the end of a successful update process, the following message will be displayed (the firmware version is only an example):

```
FW updated successfully!
Welcome to the Dell IOM Management Console firmware
1.0.034-201005141703-67
#
```

Step 8: Login to the PTM command line interface. Run:

```
# login admin
```

Step 9: To confirm that all Mellanox PhyX® chips have the same firmware version, run the command:

```
& show image ver
Software image version: 1.0.034-201005141703-67
Component #1 FW version: 8.2.966
Component #2 FW version: 8.2.966
Component #3 FW version: 8.2.966
&
```



NOTE: The software and firmware versions are displayed as an example.