

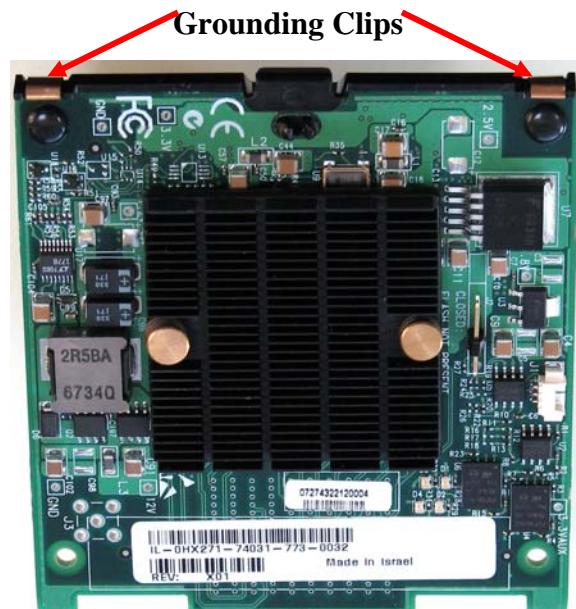
Installation Guide for ConnectX IO Mezzanine Cards for Dell PowerEdge M1000e-series Blade Servers

Installation of this mezzanine I/O card should only be done by a properly qualified technician or engineer. Installation or service not authorized by Dell or performed by unqualified personnel may void guarantees and warranties.

Read and follow all safety precautions specified in this document and in the Power Edge documentation.

Use the documentation supplied with the PowerEdge M1000e-series Blade Servers to remove and replace the blade from the chassis.

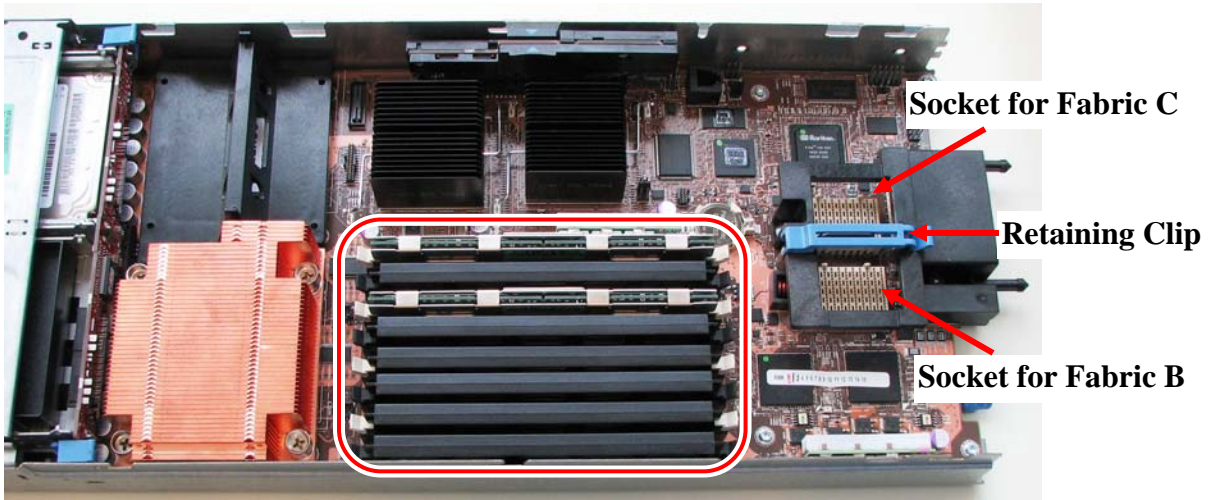
The card shown below has grounding clips that must come in contact with the chassis after the card is installed.



Make sure that you are properly grounded.



Make sure that the equipment, both while in the chassis and while removed from the chassis, is properly grounded to prevent ESD.

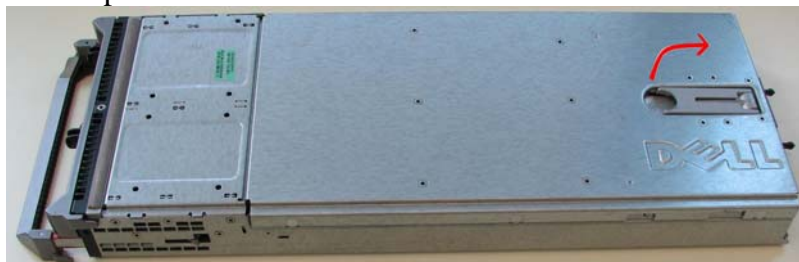


DIMMS can be hot!
Allow sufficient time for the blade components to cool before starting this procedure.

The card can be placed in either of two available slots.

Installing the Mezzanine I/O Card

1. Remove the blade from the chassis.
2. Remove the cover from the blade.
 - a. With the blade sitting on the work table swing the clip up and back until the stop. This action moves the cover back from the blade body.
 - b. Grasp the latch and lift the cover from the blade.

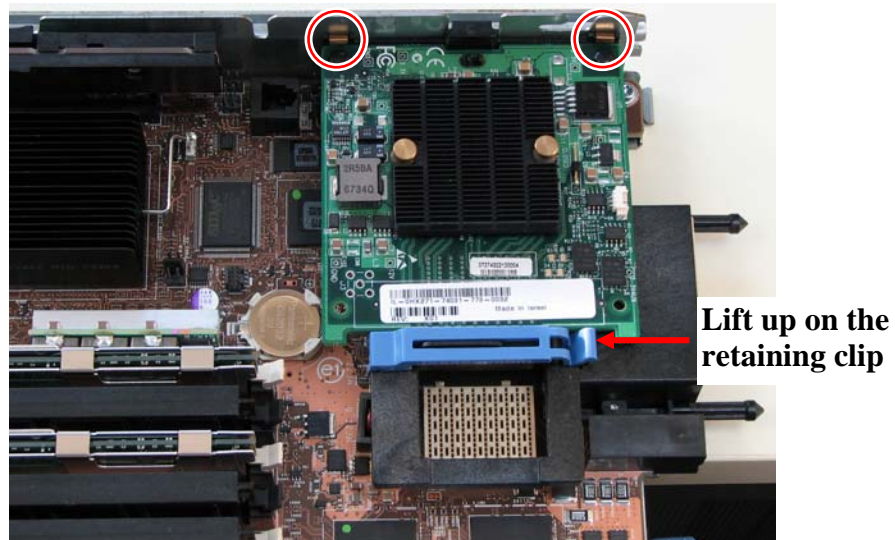




Avoid touching the DIMM components.

3. Open the retaining clip.

Note the metal clips grounds the mezzanine card to the chassis



The card can be placed in either of two available slots. However if the M3601Q module is to be used as the switch blade, the mezzanine I/O card must be installed in the socket for Fabric C.

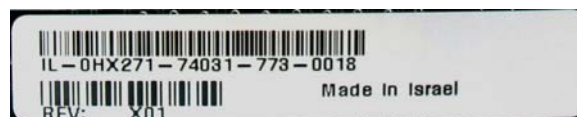
4. Expose the socket to be used for the new card.
 - a. When replacing an existing card, remove the card from the socket. Grab the card on the edge on the side with UPC number and pull up while gently rocking the card back and forth.
 - b. For a new installation remove the protective cover enclosing the socket for the card.

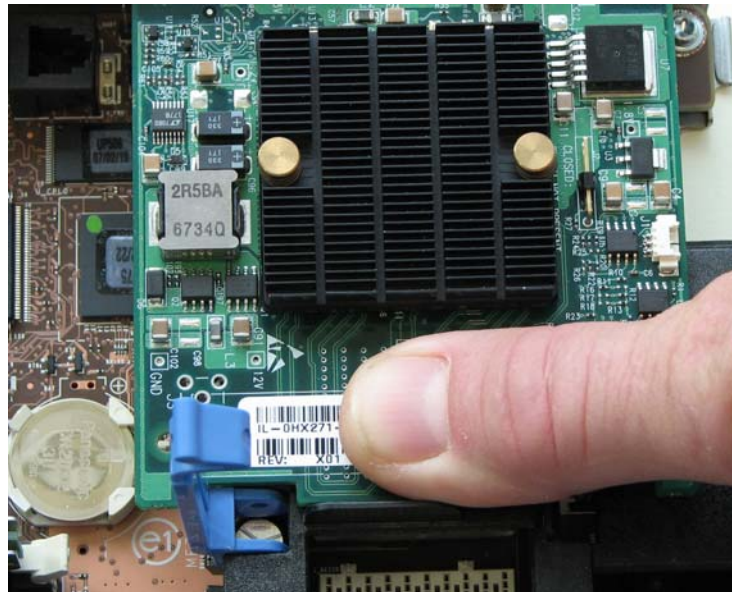


Hold the mezzanine I/O card by the edges only.

Line up the adapter card so that the pins of the adapter card are over the sockets in the blade server.

5. Plug the card into the socket by placing your thumb over the UPC symbol (see sample UPC below) and pressing down until the card reaches the bottom.





6. Close the retaining clip.
7. Replace the blade server cover.
8. Replace the blade server into the chassis.

EMC Certifications

This equipment has been tested and found to comply with the limits for a Class A digital device pursuant to Part 15 of the FCC Rules. These limits are designed to provide reasonable protection against harmful interference when the equipment is operated in a commercial environment. This equipment generates, uses, and can radiate radio frequency energy and, if not installed and used in accordance with the manufacturer's instruction manual, may cause harmful interference with radio communications. Operation of this equipment in a residential area is likely to cause harmful interference, in which case you will be required to correct the interference at your own expense.

この装置は、情報処理装置等電波障害自主規制協議会（VCCI）の基準に基づくクラスA情報技術装置です。この装置を家庭環境で使用すると電波妨害を引き起こすことがあります。この場合には使用者が適切な対策を講ずるよう要求されることがあります。