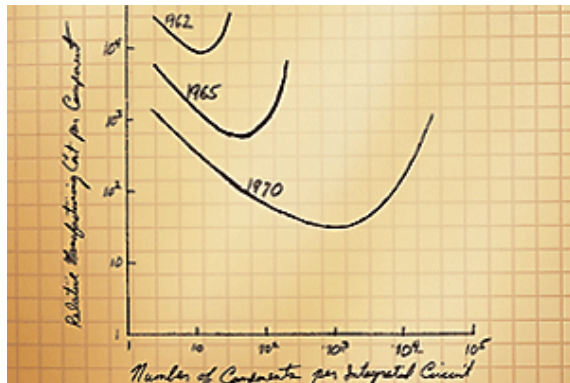




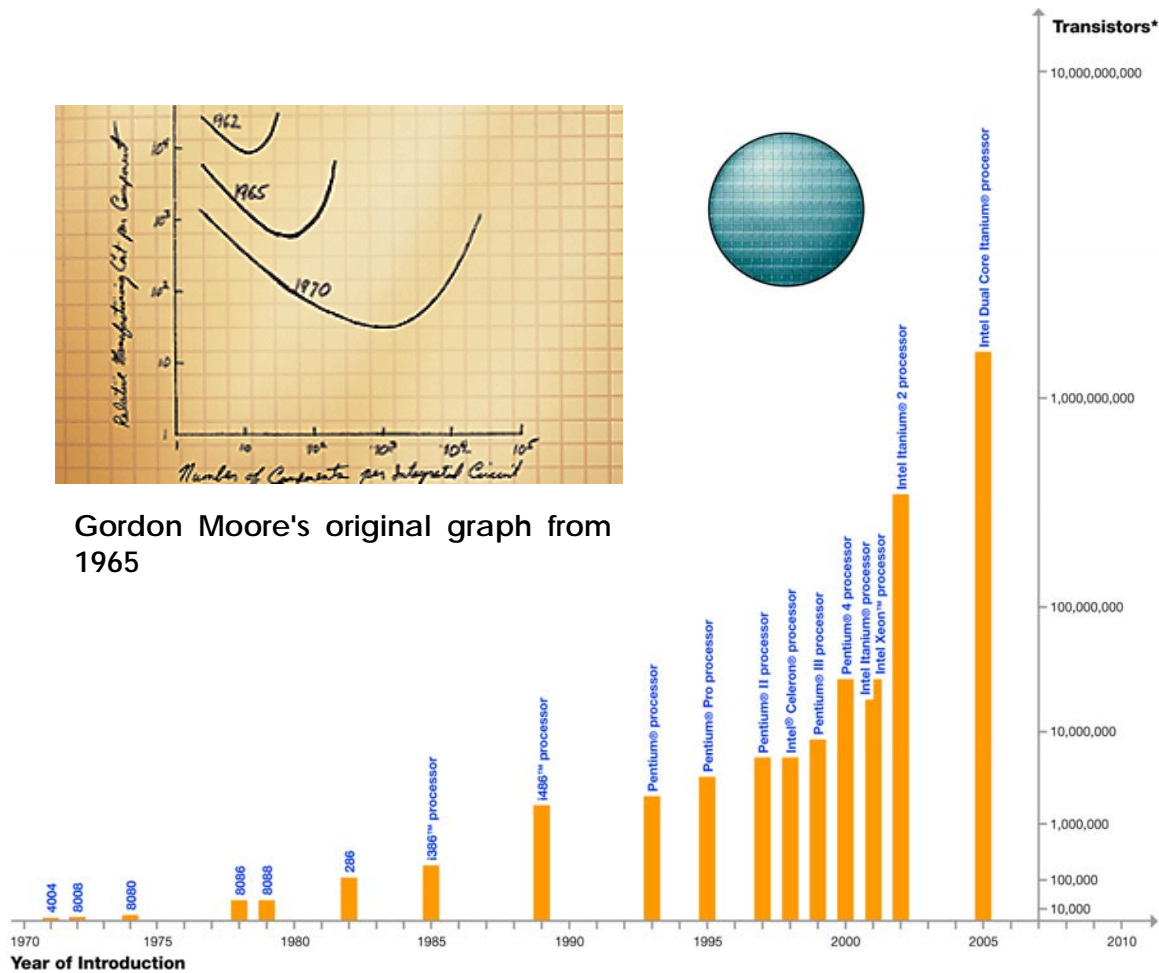
Connectivity in the Multi-core Environment

"In 1978, a commercial flight between New York and Paris cost around \$900 and took seven hours. If the principles of Moore's Law had been applied to the airline industry the way they have to the semiconductor industry since 1978, that flight would now cost about a penny and take less than one second." (Source: Intel)

In 1965, Gordon Moore predicted that the number of transistors that could be integrated into a single silicon chip would approximately double about every two years. For more than forty years Intel has been transforming that law into reality. The increase in transistor density enables more transistors on a single chip and therefore increases in the CPU performance. However, it is not the only factor driving the CPU performance, as the increase of the CPU clock frequency, a bi-product of the transistor density was an important factor in the overall performance improvement.



Gordon Moore's original graph from 1965

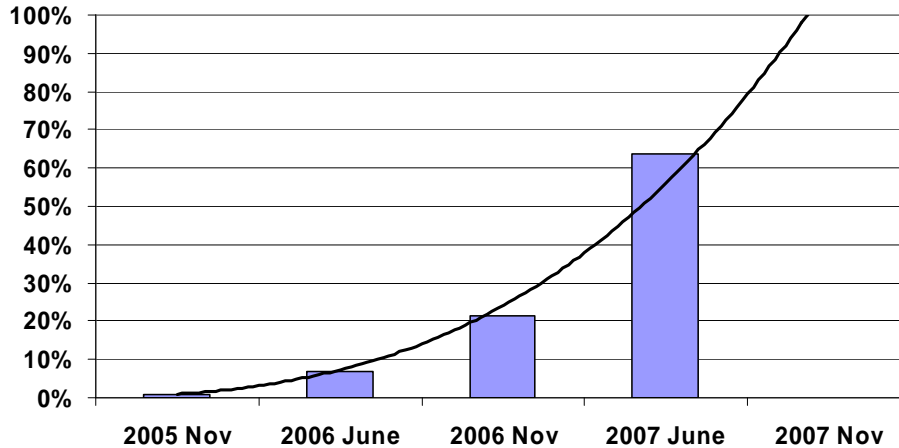


*Note: Vertical scale of chart not proportional to actual Transistor count.

High-performance computations are rapidly becoming a critical tool for conducting research, creative activity, and economic development. In order to provide intense computing platforms and still maintain the historic rates of performance and price/performance improvements, more execution cores are being integrated into each CPU. With multiple cores executing simultaneously, CPU clock frequency can be reduced in order to contain heat generation, while still increasing total system performance. This mega-trend is one of three trends that are shaping

the technical computing market – clusters, multi-core environments, and high-performance industry standard interconnects.

Top500 Multi-Core Clusters Percentage



Connecting multi-core platforms

Efficient data transfer between clustered compute nodes is critical for balanced system performance. In a balanced system, the overall performance is equal to or greater than the sum of its components, while in a non-balanced system, the performance is less than the sum. The challenge of achieving balanced performance becomes more evident in multi-core environments. A multi-core environment introduces high demands on the cluster interconnect and the interconnect needs to be able to handle multiple I/O streams simultaneously.

By providing low-latency, high-bandwidth and extremely low CPU overhead, InfiniBand is emerging as the most deployed high-speed interconnect, replacing proprietary or low-performance solutions. In a multi-core environment, it is essential to avoid interconnect protocol processing in the CPU cores. In order to maximize the overall compute cluster efficiency and to allow performance-hungry applications to efficiently utilize the CPU's core resources, a fully hardware transport-offload solution is needed. Furthermore, un-necessary overhead on the CPU cores reduces the ability of balanced computing between the various cores, leading to higher degradation in real application performance.

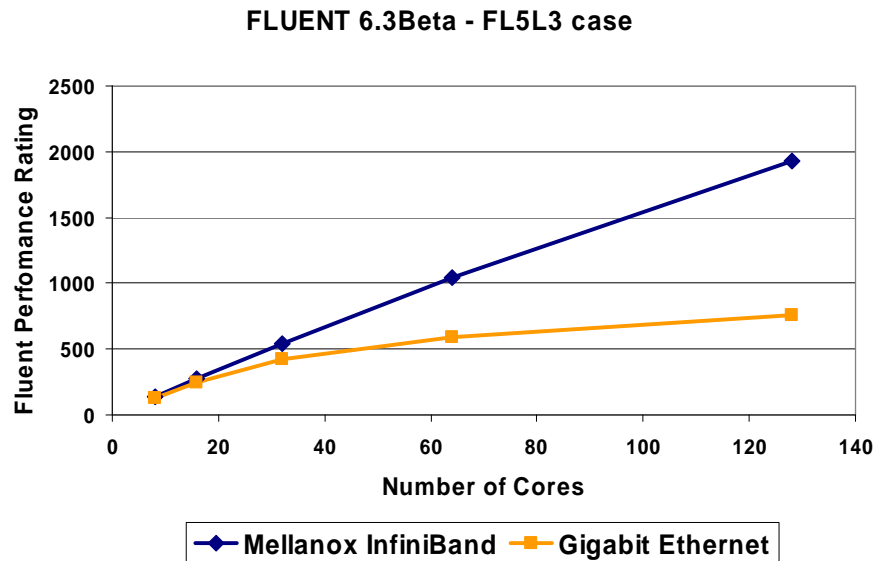
Interconnect flexibility is another requirement for multi-core systems. As various cores can perform different tasks, it is necessary to provide remote direct memory access (RDMA) along with the traditional semantics of Send/Receive. RDMA and Send/Receive in the same network provides the user with a variety of tools that are crucial for achieving the best application performance and the ability to utilize the same network for multiple tasks, such as compute, storage and management.

Mellanox InfiniBand provides both the flexibility and a full hardware transport-offload implementation. Transport-offload capabilities enable various applications and software interfaces, such as Message Passing Interface (MPI) to use overlapping of CPU computations with the interconnect communication cycles to reduce run time of MPI-based applications and to

increase application performance. Mellanox's hardware implementation also provides quality of service (QoS), so different I/O streams could be served as required by the application.

Applications demand a high-speed interconnect

Computational Fluid Dynamics (CFD) is one of the branches of fluid mechanics that uses numerical methods and algorithms to solve and analyze problems that involve fluid flows. At the core of any CFD calculation is a computational grid, used to divide the solution domain into thousands or millions of elements where the problem variables are computed and stored. FLUENT, a leading commercial software provider for solving fluid flow problems, implemented flexible parallel processing capabilities in order to effectively utilize the multi-core environments. Dynamic load balancing automatically detects and analyzes parallel performance and adjusts the distribution of computational cells among the processors and the server nodes. The following chart compares Mellanox InfiniBand and Gigabit Ethernet using FLUENT FL5L benchmark, on Intel dual-core Xeon 3GHz 5100 series (code name Woodcrest) servers.

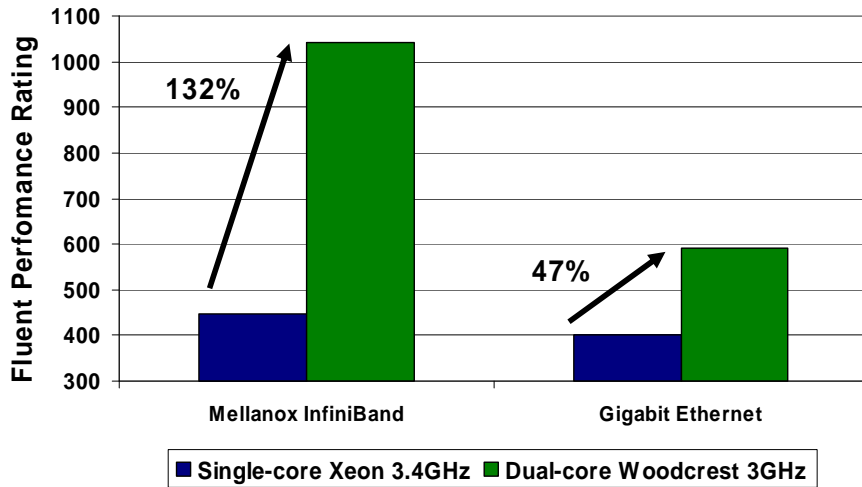


Mellanox InfiniBand delivers superior performance than Gigabit Ethernet - up to 155% higher performance on 128 CPU cores - due to InfiniBand's proven efficiency and super-linear scaling capabilities.

In order to determine the importance of the interconnect architecture for multi-core environments, the same benchmark was used to compare between single-core Xeon 3.4GHz and dual-core Xeon 5100 series 3GHz (Woodcrest). In both cases, InfiniBand shows higher performance, but the difference between Mellanox InfiniBand and Gigabit Ethernet increases on the multi-core setting. In order to meet the requirements of each CPU core, multi-core servers demand higher I/O throughput from the interconnect solution. InfiniBand is proved to provide the aggregate CPU cores demands, while Gigabit Ethernet fails to do so.



FLUENT - Performance Rating FL5L3 case, 16 nodes cluster



As dual-core environments introduce higher I/O requirement than single-core ones and quad-core environments will increase that demand, a high throughput interconnect with low CPU overhead is vital in order to maintain high CPU and application efficiency.

Multi-core environments increase the demand for I/O throughput, low-latency, low CPU overhead, flexibility and high-efficiency in order to maintain a balanced system and to achieve high application performance and scaling. Low-performance interconnect solutions, or lack of native hardware support, will result in degraded system performance. Mellanox high-speed InfiniBand meets the multi-core system requirements and provides a balanced compute solution with Intel multi-core technology.