



HDR 200Gb/s QSFP56 Direct Attach Copper Cable

MCP1650-H0xxEyy

Mellanox® MCP1650-H0xxEyy DAC cables are high speed, cost-effective alternatives to fiber optics in 200Gb/s InfiniBand HDR applications.

Mellanox QSFP56 passive copper cable⁽¹⁾ contains eight high-speed copper pairs, each operating at data rates of up to 50Gb/s. Each QSFP56 port comprises an EEPROM providing product information, which can be read by the host system.

Mellanox's unique quality passive copper cable solutions provide power-efficient connectivity for short distance interconnects. It enables higher port bandwidth, density and configurability at a low cost and reduced power requirement in the data centers.

Rigorous cable production testing ensures best out-of-the-box installation experience, performance and durability.

Table 1 - Absolute Maximum Ratings

Parameter	Minimum	Maximum	Units
Supply voltage	-0.3	3.6	V
Data input voltage	-0.3	3.6	V
Control input voltage	-0.3	3.6	V
Storage temperature	-40	85	°C

Table 2 - Operational Specifications

Parameter	Minimum	Typical	Maximum	Units
Supply voltage (Vcc)	3.135	3.3	3.465	V
Power consumption	---	---	0.1	W
Operating case temperature	0	---	70	°C
Operating relative humidity	5	---	85	%

Table 3 - Electrical Specifications

Parameter	Minimum	Typical	Maximum	Units
Characteristic impedance	90	100	110	Ω
Time propagation delay (informative)	---	---	4.5	ns/m



HIGHLIGHTS

- IBTA InfiniBand HDR compliant
- Up to 200Gb/s data rate
- 4x 50Gb/s PAM4 modulation
- SFF-8665 compliant
- Operating case temperature of 0-70°C
- Single 3.3V supply voltage
- Bit Error Rate (BER) better than 1E-15 with Mellanox IB HDR systems
- Hot pluggable
- RoHS compliant
- LSZH (Low Smoke Zero Halogen) jacket
- LF (Lead Free) HF (Halogen Free) PCB
- SFF-8636 compliant I²C management interface

⁽¹⁾ Raw cables are provided from different sources to ensure supply chain robustness.

Table 4 - Cable Mechanical Specifications

Ordering Part No.	Length (m)	AWG	Single Cable Diameter	Minimum Bend Radius
MCP1650-H00AE30	0.5 ± 0.025 mm	30	7.1 ± 0.35 mm	Single bend: 35.5mm Assembly/repeated bend: 71mm
MCP1650-H001E30	1 ± 0.025 mm			
MCP1650-H01AE30	1.5 ± 0.025 mm			
MCP1650-H002E26	2 ± 0.050 mm	26	9.4 ± 0.4 mm	Single bend: 47mm Assembly/repeated bend: 94mm
MCP1650-H02AE26	2.5 ± 0.050 mm			
MCP1650-H003E26	3 ± 0.050 mm			

Note 1. The minimum assembly bending radius (close to the connector) is 10x the cable's outer diameter. The repeated bend (far from the connector) is also 10x the cable's outer diameter. The single bend (far from the connector) is 5x the cable's outer diameter.

Figure 1. Assembly Bending Radius

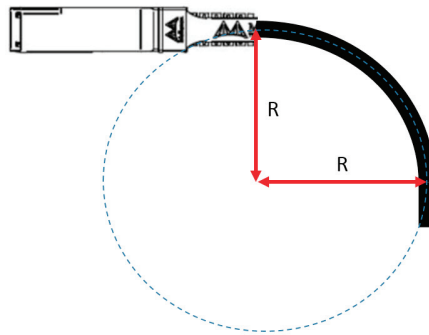
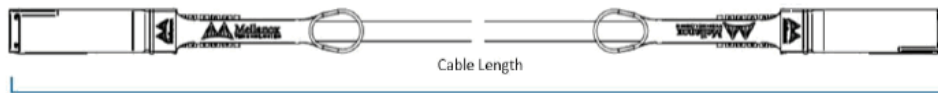


Figure 2. Cable Length



Mechanical Schematics

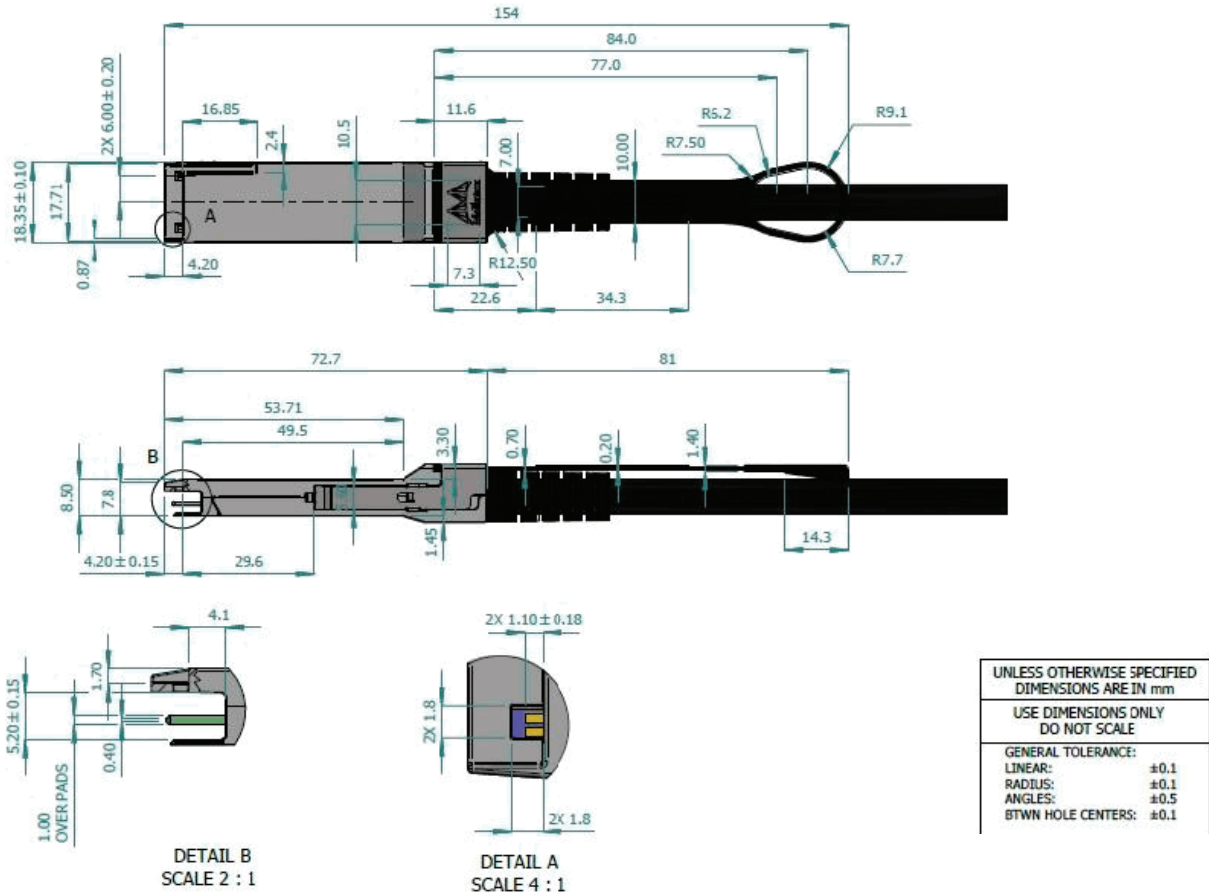


Table 5 - Part Numbers and Descriptions

Part Number	Description
MCP1650-H00AE30	Mellanox® Passive Copper cable, IB HDR, up to 200Gb/s, QSFP56, LSZH, 0.5m, black pulltab, 30AWG
MCP1650-H001E30	Mellanox® Passive Copper cable, IB HDR, up to 200Gb/s, QSFP56, LSZH, 1m, black pulltab, 30AWG
MCP1650-H01AE30	Mellanox® Passive Copper cable, IB HDR, up to 200Gb/s, QSFP56, LSZH, 1.5m, black pulltab, 30AWG
MCP1650-H002E26	Mellanox® Passive Copper cable, IB HDR, up to 200Gb/s, QSFP56, LSZH, 2m, black pulltab, 26AWG
MCP1650-H02AE26	Mellanox® Passive Copper cable, IB HDR, up to 200Gb/s, QSFP56, LSZH, 2.5m, black pulltab, 26AWG
MCP1650-H003E26	Mellanox® Passive Copper cable, IB HDR, up to 200Gb/s, QSFP56, LSZH, 3m, black pulltab, 26AWG

Note: xx = reach; yy = wire gauge

Warranty Information

Mellanox LinkX DAC cables include a 1-year limited hardware warranty, which covers parts repair or replacement.



350 Oakmead Parkway, Suite 100, Sunnyvale, CA 94085
 Tel: 408-970-3400 • Fax: 408-970-3403
www.mellanox.com