



Connect. Accelerate. Outperform.™

# **Mellanox PreBoot Drivers (FlexBoot & UEFI)**

## **User Manual**

Rev 2.4

[www.mellanox.com](http://www.mellanox.com)

NOTE:

THIS HARDWARE, SOFTWARE OR TEST SUITE PRODUCT (“PRODUCT(S)”) AND ITS RELATED DOCUMENTATION ARE PROVIDED BY MELLANOX TECHNOLOGIES “AS-IS” WITH ALL FAULTS OF ANY KIND AND SOLELY FOR THE PURPOSE OF AIDING THE CUSTOMER IN TESTING APPLICATIONS THAT USE THE PRODUCTS IN DESIGNATED SOLUTIONS. THE CUSTOMER’S MANUFACTURING TEST ENVIRONMENT HAS NOT MET THE STANDARDS SET BY MELLANOX TECHNOLOGIES TO FULLY QUALIFY THE PRODUCT(S) AND/OR THE SYSTEM USING IT. THEREFORE, MELLANOX TECHNOLOGIES CANNOT AND DOES NOT GUARANTEE OR WARRANT THAT THE PRODUCTS WILL OPERATE WITH THE HIGHEST QUALITY. ANY EXPRESS OR IMPLIED WARRANTIES, INCLUDING, BUT NOT LIMITED TO, THE IMPLIED WARRANTIES OF MERCHANTABILITY, FITNESS FOR A PARTICULAR PURPOSE AND NON-INFRINGEMENT ARE DISCLAIMED. IN NO EVENT SHALL MELLANOX BE LIABLE TO CUSTOMER OR ANY THIRD PARTIES FOR ANY DIRECT, INDIRECT, SPECIAL, EXEMPLARY, OR CONSEQUENTIAL DAMAGES OF ANY KIND (INCLUDING, BUT NOT LIMITED TO, PAYMENT FOR PROCUREMENT OF SUBSTITUTE GOODS OR SERVICES; LOSS OF USE, DATA, OR PROFITS; OR BUSINESS INTERRUPTION) HOWEVER CAUSED AND ON ANY THEORY OF LIABILITY, WHETHER IN CONTRACT, STRICT LIABILITY, OR TORT (INCLUDING NEGLIGENCE OR OTHERWISE) ARISING IN ANY WAY FROM THE USE OF THE PRODUCT(S) AND RELATED DOCUMENTATION EVEN IF ADVISED OF THE POSSIBILITY OF SUCH DAMAGE.



Mellanox Technologies  
350 Oakmead Parkway Suite 100  
Sunnyvale, CA 94085  
U.S.A.  
[www.mellanox.com](http://www.mellanox.com)  
Tel: (408) 970-3400  
Fax: (408) 970-3403

© Copyright 2016. Mellanox Technologies. All Rights Reserved.

Mellanox®, Mellanox logo, BridgeX®, CloudX logo, Connect-IB®, ConnectX®, CoolBox®, CORE-Direct®, GPUDirect®, InfiniHost®, InfiniScale®, Kotura®, Kotura logo, Mellanox Federal Systems®, Mellanox Open Ethernet®, Mellanox ScalableHPC®, Mellanox Connect Accelerate Outperform logo, Mellanox Virtual Modular Switch®, MetroDX®, MetroX®, MLNX-OS®, Open Ethernet logo, PhyX®, SwitchX®, TestX®, The Generation of Open Ethernet logo, UFM®, Virtual Protocol Interconnect®, Voltaire® and Voltaire logo are registered trademarks of Mellanox Technologies, Ltd.

Accelio™, CyPU™, FPGA Direct™, HPC-X™, InfiniBridge™, LinkX™, Mellanox Care™, Mellanox CloudX™, Mellanox Multi-Host™, Mellanox NEO™, Mellanox PeerDirect™, Mellanox Socket Direct™, Mellanox Spectrum™, NVMeDirect™, StPU™, Spectrum logo, Switch-IB™, Unbreakable-Link™ are trademarks of Mellanox Technologies, Ltd.

All other trademarks are property of their respective owners.

# Table of Contents

<b>Document Revision History</b> .....	<b>9</b>
<b>1 Mellanox PreBoot Drivers (FlexBoot &amp; UEFI)</b> .....	<b>11</b>
1.1 Overview .....	11
1.2 Supported Mellanox Adapter Devices and Firmware .....	11
<b>2 Burning the Expansion ROM Image</b> .....	<b>12</b>
2.1 Burning the Image on ConnectX® Family Devices .....	12
2.1.1 Prerequisites .....	12
2.1.2 Burning the Expansion ROM Image .....	12
2.2 Removing the Expansion ROM Image .....	12
<b>3 Preparing the DHCP Server in Linux</b> .....	<b>14</b>
3.1 Case I: InfiniBand Ports .....	14
3.1.1 Installing DHCP .....	14
3.1.2 Configuring the DHCP Server.....	14
3.1.3 Running the DHCP Server.....	16
3.1.4 Adding Device Driver Support in Linux Kernels/Initrd .....	16
3.2 Case II: Ethernet Ports .....	16
3.2.1 Extracting the MAC Address – Method I .....	16
3.2.2 Extracting the MAC Address – Method II – FlexBoot Only.....	17
3.2.3 Extracting the MAC Address – Method III .....	17
3.2.4 Placing MAC Addresses in /etc/dhcpd.conf.....	17
<b>4 Subnet Manager – OpenSM</b> .....	<b>18</b>
<b>5 BIOS Configuration</b> .....	<b>19</b>
5.1 FlexBoot (Legacy BIOS Mode).....	19
5.2 UEFI (UEFI BIOS Mode) .....	19
<b>6 Flexboot User Interface</b> .....	<b>20</b>
6.1 Skipping FlexBoot, FlexBoot User Interface and FlexBoot Port.....	20
6.2 Invoking the User Interface.....	20
6.2.1 Browsing the User Interface Menu .....	20
6.2.2 Accessing FlexBoot Sub Menus.....	21
6.3 Configuring System Settings .....	21
6.3.1 Editing the Parameters using Free Text .....	21
6.3.2 Editing the Parameters using Set Values .....	22
6.3.3 Deleting Configurable Settings .....	22
6.3.4 Restoring Default Configurations.....	22
6.4 Exiting FlexBoot User Interface .....	24
<b>7 FlexBoot System Settings Configuration Options</b> .....	<b>25</b>

7.1	System Setup .....	25
7.1.1	Bus:Device:Function .....	25
7.1.2	Chip Type.....	26
7.1.3	Device Name .....	26
7.1.4	PCI Device ID .....	26
7.1.5	Banner Menu Timeout .....	26
7.1.6	Virtualization Mode .....	26
7.1.7	Number of Virtual Functions .....	26
7.2	Firmware Image Properties .....	27
7.2.1	Flexboot Version.....	27
7.2.2	Family Firmware Version .....	27
7.3	Main Configuration .....	28
7.3.1	Blink LEDs .....	28
7.3.2	MAC Address.....	29
7.4	NIC Configuration .....	29
7.4.1	Legacy Boot Protocol.....	30
7.4.2	PKey Value .....	30
7.4.3	Boot Retry Count .....	30
7.4.4	Wake on LAN.....	31
7.4.5	Option ROM.....	31
7.4.6	Virtual LAN ID .....	31
7.4.7	Virtual LAN Mode.....	32
7.5	iSCSI General Parameters .....	32
7.5.1	DHCP IP .....	33
7.5.2	DHCP Parameters .....	33
7.5.3	IP Version .....	33
7.5.4	CHAP Authentication .....	33
7.5.5	CHAP Mutual Authentication .....	33
7.6	iSCSI Initiator Parameters .....	34
7.6.1	CHAP ID .....	34
7.6.2	CHAP Secret .....	35
7.6.3	IPv4 Address .....	35
7.6.4	IPv4 Primary DNS.....	35
7.6.5	IPv4 Default Gateway.....	35
7.6.6	iSCSI Name .....	36
7.6.7	Subnet Mask.....	36
7.7	iSCSI First Target Parameters .....	37
7.7.1	Boot LUN .....	37

7.7.2	Connect.....	39
7.7.3	iSCSI Name .....	39
7.7.4	CHAP ID .....	39
7.7.5	CHAP Secret .....	39
7.7.6	IP Address .....	40
7.7.7	TCP Port .....	40
<b>8</b>	<b>HII System Settings Configuration Options .....</b>	<b>41</b>
8.1	Main Configuration Page .....	41
8.1.1	Blink LEDs .....	41
8.1.2	Device Name .....	42
8.1.3	Chip Type.....	42
8.1.4	PCI Device ID .....	42
8.1.5	PCI Address.....	42
8.1.6	Link Status .....	42
8.1.7	Network Link Type .....	42
8.1.8	MAC Address.....	43
8.1.9	Virtual MAC Address .....	43
8.2	Firmware Image Properties .....	44
8.2.1	Family Firmware Version .....	44
8.2.2	EFI Version .....	44
8.3	NIC Configuration .....	45
8.3.1	Banner Message Timeout.....	45
8.3.2	Legacy Boot Protocol.....	45
8.3.3	Virtual LAN Mode.....	46
8.3.4	Virtual LAN ID .....	46
8.3.5	Link Speed .....	46
8.3.6	Option ROM.....	46
8.3.7	Boot Retry Count .....	47
8.3.8	Wake on LAN.....	47
8.4	Device Level Configuration.....	48
8.4.1	Virtualization Mode .....	48
8.4.2	PCI Virtual Functions Advertised.....	48
8.5	iSCSI General Parameters .....	49
8.5.1	TCP/IP Parameters via DHCP.....	49
8.5.2	iSCSI Parameters via DHCP .....	49
8.5.3	CHAP Authentication .....	50
8.5.4	CHAP Mutual Authentication .....	50
8.5.5	IP Version .....	50

8.6	iSCSI Initiator Parameters .....	51
8.6.1	CHAP ID .....	51
8.6.2	CHAP Secret .....	51
8.6.3	IPv4 Address .....	52
8.6.4	IPv4 Primary DNS.....	52
8.6.5	IPv4 Default Gateway.....	52
8.6.6	iSCSI Name .....	53
8.6.7	Subnet Mask.....	53
8.7	iSCSI First Target Parameters .....	54
8.7.1	Boot LUN .....	54
8.7.2	Connect.....	55
8.7.3	iSCSI Name .....	55
8.7.4	CHAP ID .....	55
8.7.5	CHAP Secret .....	55
8.7.6	IP Address .....	56
8.7.7	TCP Port .....	56
<b>9</b>	<b>How to Boot.....</b>	<b>57</b>
9.1	PXE Boot .....	57
9.1.1	Prerequisites.....	57
9.1.2	Starting Boot.....	57
9.1.3	How to Boot to ESXi .....	58
9.1.4	How to Boot Using HTTP Script.....	58
9.2	iSCSI.....	58
9.2.1	Installing to iSCSI Target.....	58
9.2.2	Configuring an iSCSI Target in Linux Environment.....	59
9.3	Booting from FlexBoot via IPv6 .....	60
9.4	Legacy Boot Priority Behavior .....	61
9.4.1	Legacy Boot Protocol PXE .....	61
9.4.2	Legacy Boot Protocol iSCSI .....	61
9.4.3	CHAP Authentication and CHAP Mutual Authentication .....	63
<b>10</b>	<b>UEFI PXE Boot.....</b>	<b>63</b>
<b>Appendix A:</b>	<b>Diskless Machines.....</b>	<b>64</b>
A.1	Case I: InfiniBand Ports.....	64
A.1.1	Example: Adding an IB Driver to initrd (Linux) .....	65

## List of Figures

Figure 1: NIC Label .....	16
Figure 2: Main Menu Window .....	21
Figure 3: Free Text Editing Example .....	22
Figure 4: Exit Menu .....	24
Figure 5: System Setup Menu .....	25
Figure 6: Firmware Image Properties Menu .....	27
Figure 7: Main Configuration .....	28
Figure 8: Ethernet NIC Configuration .....	29
Figure 9: InfiniBand NIC Configuration .....	30
Figure 10: iSCSI General Parameters .....	32
Figure 11: iSCSI Initiator Parameters .....	34
Figure 12: Main Configuration Form .....	41
Figure 13: Firmware Image Properties Menu .....	44
Figure 14: Ethernet NIC Configuration .....	45
Figure 15: Device Level Configuration .....	48
Figure 16: iSCSI General Parameters .....	49
Figure 17: iSCSI Initiator Parameters .....	51
Figure 18: iSCSI First Target Parameters .....	54

## List of Tables

Table 1: Document Revision History .....	9
Table 2: Supported Mellanox Adapter Devices and Firmware.....	11
Table 3: PXE Browsing Keys.....	20



## Document Revision History

**Table 1: Document Revision History**

Revision	Date	Description
2.4	January 31, 2015	<ul style="list-style-type: none"> <li>Added the following sections: <ul style="list-style-type: none"> <li><a href="#">UEFI (UEFI BIOS Mode)</a></li> <li><a href="#">HII System Settings Configuration Options</a> and its subsections</li> <li><a href="#">Booting from FlexBoot via IPv6</a></li> </ul> </li> </ul>
2.3	September 10, 2015	<ul style="list-style-type: none"> <li>Added the following sections: <ul style="list-style-type: none"> <li><a href="#">Banner Menu Timeout</a></li> <li><a href="#">PKey Value</a></li> </ul> </li> <li>Updated the following sections: <ul style="list-style-type: none"> <li><a href="#">Supported Mellanox Adapter Devices and Firmware</a></li> <li><a href="#">Main Configuration</a></li> <li><a href="#">Blink LEDs</a></li> <li><a href="#">NIC Configuration</a></li> <li><a href="#">Prerequisites</a></li> </ul> </li> <li>Removed the following section: <ul style="list-style-type: none"> <li>FlexBoot Package</li> </ul> </li> </ul>
2.2	July 08, 2015	<ul style="list-style-type: none"> <li>Added <a href="#">UEFI PXE Boot</a></li> </ul>
	June 23, 2015	<ul style="list-style-type: none"> <li>Updated the “Value restrictions” description in section <a href="#">Number of Virtual Functions</a></li> </ul>
	May 15, 2015	<ul style="list-style-type: none"> <li>Added the following sections: <ul style="list-style-type: none"> <li><a href="#">DHCP IP</a></li> <li><a href="#">DHCP Parameters</a></li> <li><a href="#">IP Version</a></li> <li><a href="#">CHAP Authentication</a></li> <li><a href="#">CHAP Mutual Authentication</a></li> <li><a href="#">Legacy Boot Protocol PXE</a></li> <li><a href="#">Legacy Boot Protocol iSCSI</a></li> <li><a href="#">CHAP Authentication and CHAP Mutual Authentication</a></li> </ul> </li> <li>Updated the following sections: <ul style="list-style-type: none"> <li><a href="#">Invoking the User Interface</a></li> <li><a href="#">CHAP ID</a></li> <li><a href="#">CHAP Secret</a></li> </ul> </li> <li>Removed the following sections: <ul style="list-style-type: none"> <li>Max Number of VFs Supported</li> <li>Virtual MAC Address</li> </ul> </li> </ul>

Revision	Date	Description
2.1	February 09, 2015	<ul style="list-style-type: none"><li>• Updated the note in section <a href="#">Running the DHCP Server</a></li><li>• Removed sections:<ul style="list-style-type: none"><li>• iSCSI General Parameters</li><li>• DHCP Parameters</li><li>• DHCP IP</li><li>• DHCP Parameters</li><li>• IP Version</li></ul></li></ul>
2.0	January 15, 2015	Initial release of the restructured new User Manual.

# 1 Mellanox PreBoot Drivers (FlexBoot & UEFI)

## 1.1 Overview

Mellanox PreBoot drivers are a multiprotocol remote boot technology that support remote Boot over InfiniBand (BoIB) and over Ethernet.

Using Mellanox Virtual Protocol Interconnect (VPI) technologies available in ConnectX® adapters, PreBoot drivers give IT Managers' the choice to boot from a remote storage target (iSCSI target) or a LAN target (Ethernet Remote Boot Server) using a single ROM image on Mellanox ConnectX products.

FlexBoot is based on the open source project iPXE available at <http://www.ipxe.org>.

PreBoot drivers first initialize the adapter device, senses the port protocol – Ethernet or InfiniBand, and brings up the port. Then it connects to a DHCP server to obtain its assigned IP address and network parameters, and also to obtain the source location of the kernel/OS to boot from. The DHCP server instructs the PreBoot drivers to access the kernel/OS through a TFTP server, an iSCSI target, or some other service.

For an InfiniBand port, Mellanox PreBoot drivers implement a network driver with IP over IB acting as the transport layer. IP over IB is part of the Mellanox OFED for Linux software package (see [www.mellanox.com](http://www.mellanox.com) → Products → InfiniBand/VPI Drivers → FlexBoot).

## 1.2 Supported Mellanox Adapter Devices and Firmware

The package supports the following HCA and firmware versions:

**Table 2: Supported Mellanox Adapter Devices and Firmware**

HCA's	Firmware Version	FlexBoot Version
ConnectX®-3	2.36.5000	3.4.750
ConnectX®-3 Pro	2.36.5000	3.4.750
ConnectX®-4	12.14.xxxx	3.4.750
ConnectX®-4 Lx	14.14.xxxx	3.4.750
Connect-IB®	10.14.xxxx	3.4.750

## 2 Burning the Expansion ROM Image

### 2.1 Burning the Image on ConnectX® Family Devices

#### 2.1.1 Prerequisites

- Expansion ROM Image

The expansion ROM images can be compiled using the Mellanox FlexBoot code source available in the FlexBoot webpage on [www.mellanox.com](http://www.mellanox.com).

For further information on how to compile the code source, please refer to the `pxebuild.py` file inside the code source.

- Firmware Burning Tools

You need to install the Mellanox Firmware Tools (MFT) package (version 4.1.0 or later) in order to burn the PXE ROM image. To download MFT, see Firmware Tools under [www.mellanox.com](http://www.mellanox.com) > Products > InfiniBand/VPI Drivers > Firmware Tools.

#### 2.1.2 Burning the Expansion ROM Image



**NOTE:** On selected platforms when burning the UEFI ROM image on a particular device, the UEFI controls other devices of the same type, if such devices do not have UEFI burned on them.

➤ *To burn the composite image, perform the following steps:*

- Obtain the MST device name. Run:

```
# mst start
```

The device name will be of the form: `mt<dev_id>_pci{<cr0|conf0}<sup>1`.

- Create and burn the composite image. Run:

```
flint -d <mst device name> brom <expansion ROM image>
```

- FlexBoot Example on Linux:**

```
flint -d /dev/mst/mt4103_pci_cr0 brom FlexBoot-3.4.750_4103.mrom
```

- FlexBoot Example on Windows:**

```
flint -d mt4103_pci_cr0 brom FlexBoot-3.4.750_4103.mrom
```

- UEFI Example on Linux:**

```
flint -d /dev/mst/mt4103_pci_cr0 brom  
14_8_43_RELEASE_X64_0x1007.efirom
```

- UEFI Example on Windows:**

```
flint -d mt4103_pci_cr0 brom 14_8_43_RELEASE_X64_0x1007.efirom
```

### 2.2 Removing the Expansion ROM Image

- Remove the expansion ROM image. Run:

```
flint -d <mst device name> drom
```

<sup>1</sup> Depending on the OS, the device name may be superseded with a prefix.



**NOTE:** When removing the expansion ROM image, you also remove PreBoot drivers from the boot device list.

## 3 Preparing the DHCP Server in Linux

When the boot session starts, the PXE firmware attempts to bring up an adapter network link (port). If it succeeds to bring up a connected link, the PXE firmware communicates with the DHCP server. The DHCP server assigns an IP address to the PXE client and provides it with the location of the boot program.

### 3.1 Case I: InfiniBand Ports

#### 3.1.1 Installing DHCP

PreBoot drivers require that the DHCP server runs on a machine which supports IP over IB.

1. Prior to installing DHCP, make sure that Mellanox OFED for Linux is already installed on your DHCP server – see [www.mellanox.com](http://www.mellanox.com).
2. ISC DHCP of versions above 3.1.3 have native support for IPoIB clients. If using DHCP v3.1.3, the provided patch must be deployed. Newer versions do not require patching.
3. To download and install other supported DHCP server versions, please download Mellanox OFED from [www.mellanox.com](http://www.mellanox.com) → Products → InfiniBand/VPI Drivers → Linux SW/Drivers and refer to docs/dhcp/README.

Standard DHCP fields holding MAC addresses are not large enough to contain an IPoIB hardware address. To overcome this problem, DHCP over InfiniBand messages convey a client identifier field (in DHCP option 61) used to identify the DHCP session. This client identifier field can be used to associate an IP address with a client identifier value, such that the DHCP server will grant the same IP address to any client that conveys this client identifier.



**NOTE:** In the DHCP discover packets, Flexboot sends "hlen" 6 rather than 0.

"chaddr" will be the ethernet mac address rather than zeros.

In the DHCP server, the GUID in the client identifier can still be used to identify clients.

#### 3.1.2 Configuring the DHCP Server

##### 3.1.2.1 For ConnectX Family Devices

When a FlexBoot client boots, it sends the DHCP server various information including its DHCP client identifier. This identifier is used to distinguish between the various DHCP sessions. The value of the client identifier is composed of a prefix — ff:00:00:00:00:00:02:00:00:02:c9:00 — and an 8-byte port GUID (all separated by colons and represented in hexadecimal digits).

### 3.1.2.2 Extracting the Port GUID – Method I

➤ *To obtain the port GUID:*

1. Start mst.

```
host1# mst start
host1# mst status
```

The following MFT commands assume that the Mellanox Firmware Tools (MFT) package has been installed on the client machine.

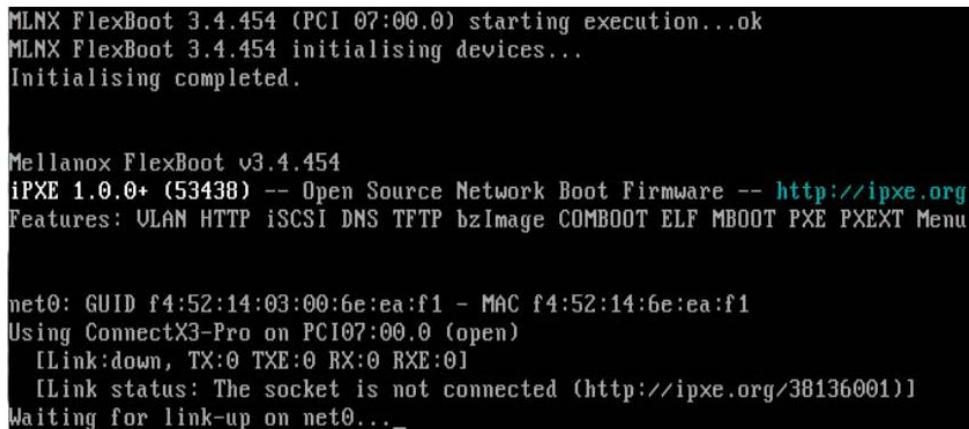
2. Obtain the Port GUID using the device name. The device name will be of the form: /dev/mst/ mt<dev\_id>\_pci{ \_cr0|conf0}.

```
flint -d <MST_DEVICE_NAME> q
```

Assuming that FlexBoot is connected via Port 1, then the Port GUID is 00:02:c9:03:00:00:10:39

### 3.1.2.3 Extracting the Port GUID – Method II

An alternative method for obtaining the port GUID involves booting the client machine via Flex- Boot. This requires having a Subnet Manager running on one of the machines in the InfiniBand subnet. The 8 bytes can be captured from the boot session as shown in the figure below.



```
MLNX FlexBoot 3.4.454 (PCI 07:00.0) starting execution...ok
MLNX FlexBoot 3.4.454 initialising devices...
Initialising completed.

Mellanox FlexBoot v3.4.454
iPXE 1.0.0+ (53438) -- Open Source Network Boot Firmware -- http://ipxe.org
Features: ULAN HTTP iSCSI DNS TFTP bzImage COMBOOT ELF MBOOT PXE PXEXT Menu

net0: GUID f4:52:14:03:00:6e:ea:f1 - MAC f4:52:14:6e:ea:f1
Using ConnectX3-Pro on PCI07:00.0 (open)
  [Link:down, TX:0 TXE:0 RX:0 RXE:0]
  [Link status: The socket is not connected (http://ipxe.org/38136001)]
Waiting for link-up on net0..._
```

### 3.1.2.4 Placing Client Identifiers in /etc/dhcpd.conf

The following is an excerpt of a /etc/dhcpd.conf example file showing the format of representing a client machine for the DHCP server

```
host host1 {
next-server 11.4.3.7; filename "pxelinux.0"; fixed-address 11.4.3.130;
option dhcp-client-identifier =
ff:00:00:00:00:00:02:00:00:02:c9:00:00:02:c9:03:00:0c:78:11;
}
```

### 3.1.3 Running the DHCP Server



**NOTE:** This section is applicable only when the Initiator's IP address is empty.

In order for the DHCP server to provide configuration records for clients, an appropriate configuration file needs to be created. By default, the DHCP server looks for a configuration file called `dhcpd.conf` under `/etc`. You can either edit this file or create a new one and provide its full path to the DHCP server using the `-cf` flag. See a file example at `docs/dhcpd.conf` of this package.

The DHCP server must run on a machine which has loaded the IPoIB module.

To run the DHCP server from the command line, enter:

```
dhcpd <IB network interface name> -d
```

Example:

```
host1# dhcpd ib0 -d
```

### 3.1.4 Adding Device Driver Support in Linux Kernels/Initrd



**NOTE:** A DHCP client can be used if you need to prepare a diskless machine with an IB driver. See Step 11 under [Example: Adding an IB Driver to initrd \(Linux\)](#).

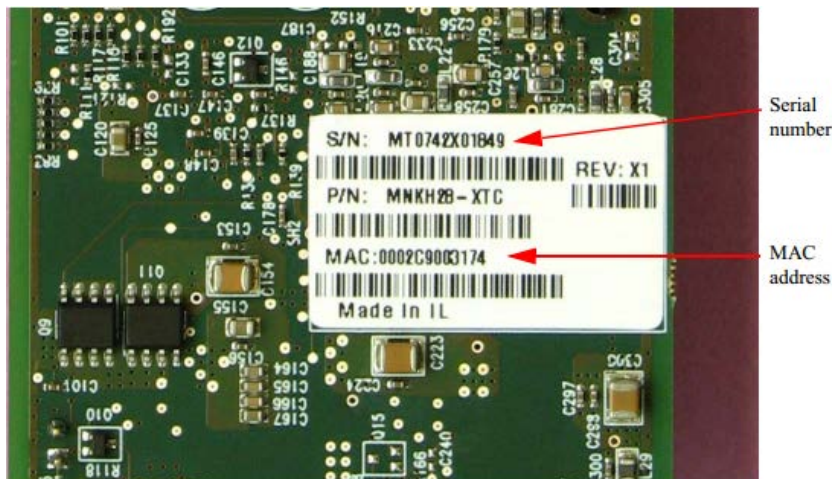
## 3.2 Case II: Ethernet Ports

When a FlexBoot client boots, it sends the DHCP server various information, including its DHCP hardware Ethernet address (MAC). The MAC address is 6 bytes long, and it is used to distinguish between the various DHCP sessions.

### 3.2.1 Extracting the MAC Address – Method I

All Mellanox Ethernet NICs have a label on the printed side of the adapter card that has the card serial number and the card MAC address.

**Figure 1: NIC Label**





### 3.2.2 Extracting the MAC Address – Method II – FlexBoot Only

The six bytes of MAC address can be captured from the display upon the boot of the ConnectX device session as shown in the figure below.

```
FlexBoot v3.4.637 (PCI 00:03.0) starting execution...ok
FlexBoot initialising devices...
Initialising completed.

FlexBoot v3.4.637
FlexBoot http://mellanox.com
Features: DNS HTTP iSCSI TFTP ULAN ELF MBOOT PXE bzImage COMBOOT Menu PXEXT
net0: f4:52:14:05:1a:d2
Using ConnectX-3 on PCI00:03.0 (open)
  [Link:down, TX:0 TXE:0 RX:0 RXE:0]
  [Link status: Unknown (http://ipxe.org/1a086101)]
Waiting for link-up on net0...
```

### 3.2.3 Extracting the MAC Address – Method III

➤ *In case the previous methods fail to work, perform the following as a last resort:*

1. Start mst.

```
host1# mst start
host1# mst status
```

The following MFT commands assume that the Mellanox Firmware Tools (MFT) package has been installed on the client machine.

2. Obtain the MAC using the device name. The device name will be of the form: /dev/mst/mt<dev\_id>\_pci{<cr0|conf0}>.

```
flint -d <MST_DEVICE_NAME> q
```

Assuming that FlexBoot is connected via Port 1, then the MAC address is 00:02:c9:0c:7c:11.

### 3.2.4 Placing MAC Addresses in /etc/dhcpd.conf

The following is an excerpt of a /etc/dhcpd.conf example file showing the format of representing a client machine for the DHCP server running on a Linux machine.

```
host host1 {
next-server 11.4.3.7; filename "pxelinux.0"; fixed-address 11.4.3.130;
hardware ethernet 00:02:c9:0c:78:12;
}
```

## 4 Subnet Manager – OpenSM



**NOTE:** This section applies to ports configured as InfiniBand only.

FlexBoot requires a Subnet Manager to be running on one of the machines in the IB network. OpenSM is part of the *Mellanox OFED for Linux* software package and can be used to accomplish this. Note that OpenSM may be run on the same host running the DHCP server but it is not mandatory.

For large InfiniBand clusters (> 100 nodes), it is recommended to use OpenSM caching. For further information, please refer to the Mellanox OFED User Manual.

## **5 BIOS Configuration**

### **5.1 FlexBoot (Legacy BIOS Mode)**

The expansion ROM image presents itself to the BIOS as a boot device. As a result, the BIOS will add to the list of boot devices “MLNX FlexBoot <ver>” for a ConnectX family device. The priority of this list can be modified through BIOS setup.

### **5.2 UEFI (UEFI BIOS Mode)**

The expansion ROM image presents itself to the BIOS as a boot device. If BIOS is set to UEFI Boot mode it will add to the list of boot devices “UEFI Network X [Device Name]” for each available port of ConnectX family devices. The priority of this list can be modified through BIOS setup.

## 6 Flexboot User Interface



**NOTE:** Boot menu is displayed as READ ONLY if the HCA card does not support flash configuration.

### 6.1 Skipping FlexBoot, FlexBoot User Interface and FlexBoot Port

You can skip FlexBoot in any of the given options below:

- Following system POST, when a FlexBoot advertisement banner and configuration prompt is displayed, Press any key other than CTRL-B.
- When FlexBoot execution starts (as depicted in the "Initializing Devices" screen output), a UI prompt for escaping shortly follows.
- After the BIOS called BEV\_ENTRY: Press ESC when prompted (2-3 seconds)
- Skip a specific port when booting starts: Press CTRL-C

### 6.2 Invoking the User Interface

Shortly after completion of the POST (Power-On-Self-Test sequence of the computer), the user will be prompted to press CTRL-B to invoke Mellanox FlexBoot User Interface. The user has few seconds to press CTRL-B before the message disappears.

```
Mellanox FlexBoot v3.4.435
iPXE (http://ipxe.org) 05:00.0 D300 PCI3.00 PnP PMM+002676C0+002816C0 D300
Press Ctrl-B to configure MLNX FlexBoot 3.4.435 (PCI 05:00.0)...
```

#### 6.2.1 Browsing the User Interface Menu

To browse the menu, use the following keys:

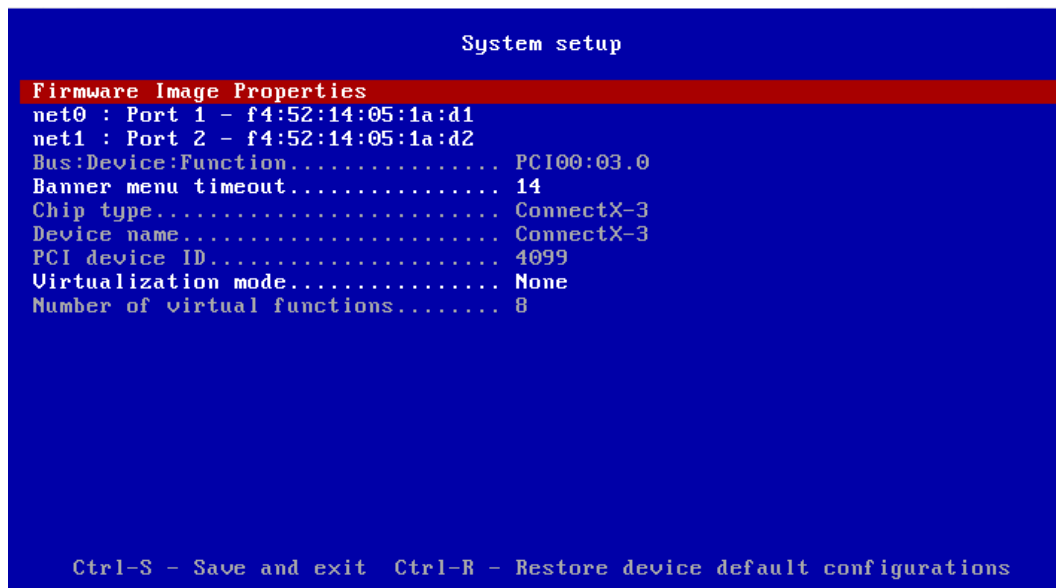
**Table 3: PXE Browsing Keys**

Key	Operation
Arrows ↑↓	Browse options ( Highlighted option is current)
Enter	On forms – to enter menu On configurable settings – edit configuration
Esc	Exit current menu

## 6.2.2 Accessing FlexBoot Sub Menus

To enter the required menu, press Enter while the option is highlighted.

**Figure 2: Main Menu Window**



For further information on FlexBoot varies menus, and the configuration options they provide, please refer to section [Configuring System Settings](#) and its subsections.

## 6.3 Configuring System Settings



**NOTE:** It is possible to save the changes made and exit the menu at any given time by pressing Ctrl+S.

### 6.3.1 Editing the Parameters using Free Text

When a configurable setting is highlighted, the instructions to edit it will be shown on screen.

If the setting is configurable via input, the description will show the input restrictions.

➤ **To change the configuration:**

1. Press Enter or start typing while the setting is highlighted.
2. [Optional] To discard the input while editing, press Ctrl+C.
3. Press Enter and wait to verify the new value is accepted and shown.

In case the value entered is invalid, an alert will be shown and the new value won't be accepted.

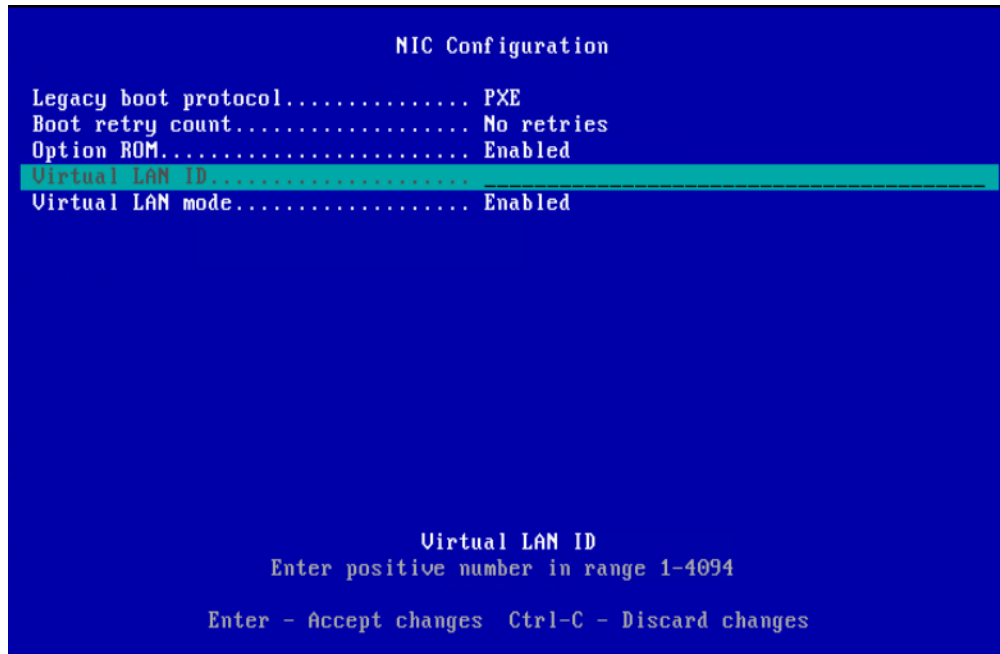


**NOTE:** Although numeric values are shown in decimal base, it is possible to insert values in different bases:

- For hexadecimal base type "0x" before the number
- For octal base type "0" before the number

- For decimal base type the number as is

**Figure 3: Free Text Editing Example**



### 6.3.2 Editing the Parameters using Set Values

When a configurable setting is highlighted, the instructions to edit it will be shown on screen.

If the setting is configurable with built-in options, the description will be “Select to change value”.

➤ **To change the configuration:**

1. Press Enter while setting is highlighted.
2. Keep pressing Enter to choose the desired value

### 6.3.3 Deleting Configurable Settings

Configurable settings can be deleted. Value will only be deleted from the current configuration and not from the flash. If the configuration has a default value, it will be set when deleting the current value.

➤ **To delete a configurable setting:**

1. Press Ctrl+D while setting is highlighted.

### 6.3.4 Restoring Default Configurations

All configurations can be restored to the default values set in the device. All configurable values will be modified to “default” or “deleted” if there is no default value in the device.

➤ **To restore defaults per port:**

- Press Ctrl+R on the main menu of the port only when applicable

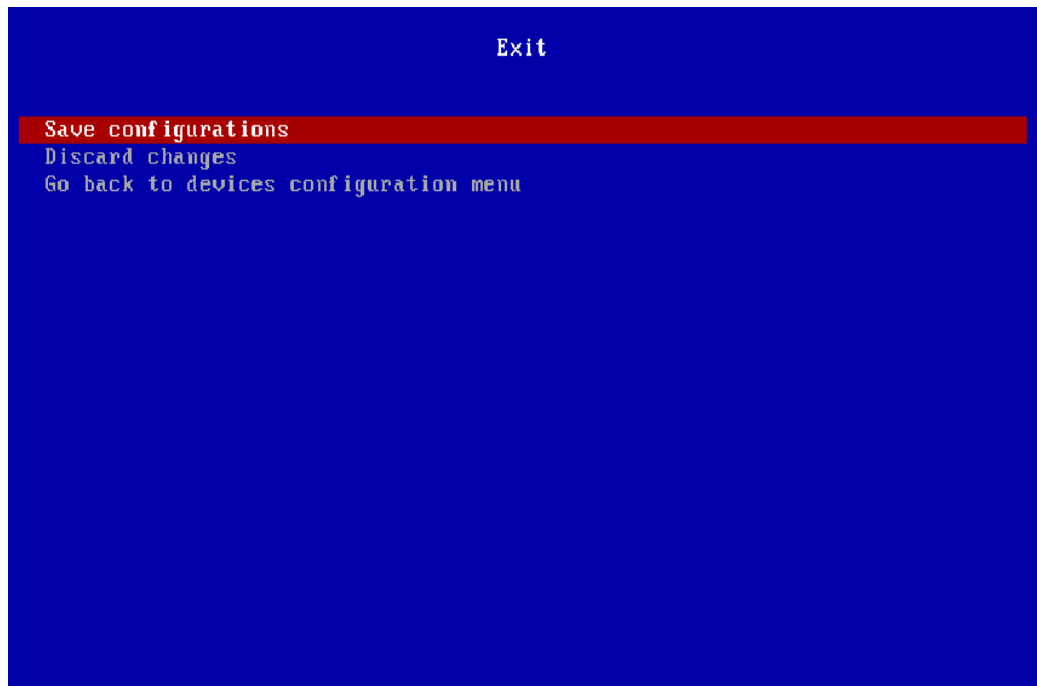
➤ *To restore defaults per device:*

- Press Ctrl+R on “System setup” menu when applicable

## 6.4 Exiting FlexBoot User Interface

To exit FlexBoot User Interface press ESC from the System Setup menu.

**Figure 4: Exit Menu**





## 7 FlexBoot System Settings Configuration Options

Below are listed the attributes shown in varies FlexBoot User Interface menus.

### 7.1 System Setup

In the following menu, you can set the following options:

- [Bus:Device:Function](#)
- [Chip Type](#)
- [Device Name](#)
- [PCI Device ID](#)
- [Banner Menu Timeout](#)
- [Virtualization Mode](#)
- [Number of Virtual Functions](#)

**Figure 5: System Setup Menu**

```

                                System setup
-----
Firmware Image Properties
net0 : Port 1 - f4:52:14:05:1a:d1
net1 : Port 2 - f4:52:14:05:1a:d2
Bus:Device:Function..... PCI00:03.0
Banner menu timeout..... 14
Chip type..... ConnectX-3
Device name..... ConnectX-3
PCI device ID..... 4099
Virtualization mode..... None
Number of virtual functions..... 8

Ctrl-S - Save and exit Ctrl-R - Restore device default configurations
    
```

#### 7.1.1 Bus:Device:Function

<b>Location:</b>	System setup
<b>Description:</b>	Specifies the BIOS assigned PCI Bus:Device:Function identifier of the card
<b>Configurable:</b>	No

### 7.1.2 Chip Type

<b>Location:</b>	System setup
<b>Description:</b>	Specifies the chip type
<b>Configurable:</b>	No

### 7.1.3 Device Name

<b>Location:</b>	System setup
<b>Description:</b>	The device's product name
<b>Configurable:</b>	No

### 7.1.4 PCI Device ID

<b>Location:</b>	System setup
<b>Description:</b>	The PCI Device ID of the controller
<b>Configurable:</b>	No

### 7.1.5 Banner Menu Timeout

<b>Location:</b>	System setup
<b>Description:</b>	Defines the Banner's timeout
<b>Configurable:</b>	Yes – via input – If virtualization mode is SR-IOV
<b>Persistency:</b>	Persistent through AC cycle
<b>Reboot required:</b>	Yes – reboot is needed in order for this change to apply
<b>Available options:</b>	1-14 sec

### 7.1.6 Virtualization Mode

<b>Location:</b>	System setup
<b>Description:</b>	Specifies the type of virtualization used by the controller on all ports. Only valid for adapters that support SR-IOV virtualization mode.
<b>Configurable:</b>	Yes – built-in options
<b>Persistency:</b>	Persistent through AC cycle
<b>Reboot required:</b>	Yes – reboot is needed in order for this change to apply
<b>Available options:</b>	1. None 2. SR-IOV

### 7.1.7 Number of Virtual Functions

<b>Location:</b>	System setup
<b>Description:</b>	The number of virtual functions advertised and usable by the driver. Only valid for adapters that support SR-IOV virtualization mode.
<b>Configurable:</b>	Yes – via input – If virtualization mode is SR-IOV

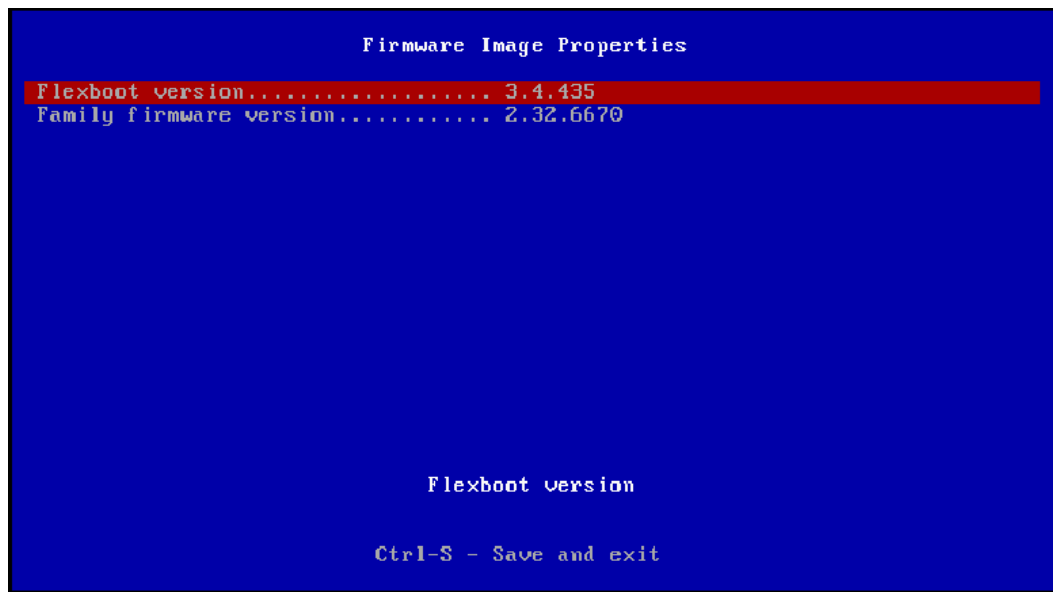
<b>Persistency:</b>	Persistent through AC cycle
<b>Reboot required:</b>	Yes – reboot is needed in order for this change to apply
<b>Value restrictions:</b>	Minimum integer value is 0. Maximum integer value is the value supported by the firmware installed.

## 7.2 Firmware Image Properties

In the following menu, you can set the following options:

- [Flexboot Version](#)
- [Family Firmware Version](#)

**Figure 6: Firmware Image Properties Menu**



### 7.2.1 Flexboot Version

<b>Location:</b>	System setup /Firmware Image Properties
<b>Description:</b>	Flexboot driver version information
<b>Configurable:</b>	No

### 7.2.2 Family Firmware Version

<b>Location:</b>	System setup /Firmware Image Properties
<b>Description:</b>	Device’s firmware version information.
<b>Configurable:</b>	No

## 7.3 Main Configuration



**NOTE:** *iSCSI Configuration* menu and all its sub-menus ([iSCSI General Parameters](#)/[iSCSI Initiator Parameters](#)/[iSCSI First Target Parameters](#)) are applicable to ConnectX@-3/ConnectX@-3 Pro adapter cards only.

In the following menu, you can set the following options:

- [Blink LEDs](#)
- [MAC Address](#)

**Figure 7: Main Configuration**

```

net0 : Port 1 - f4:52:14:05:1a:d1
NIC Configuration
iSCSI Configuration
Blink leds..... 0
Virtual MAC Address..... f4:52:14:05:1a:d1
Physical MAC Address..... f4:52:14:05:1a:d1

Ctrl-S - Save and exit Ctrl-R - Restore port default configurations
    
```

### 7.3.1 Blink LEDs



**NOTE:** Blink LEDs will not appear in the boot menu if the feature is not supported by the firmware.



**NOTE:** This configuration is applied when pressing Enter, so it may take longer time to save than other configurations.

<b>Location:</b>	System setup/Port main configurations
<b>Description:</b>	Specifies the number of seconds the LEDs on physical network port should blink to assist with port identification. Only valid for adapters with blink LEDs.
<b>Configurable:</b>	Yes – via input
<b>Persistency:</b>	Valid only for current cycle
<b>Effects:</b>	Blink LEDs duration value of the port will be as set in the current cycle

<b>Value restrictions:</b>	The minimum integer value is 0 and the maximum is 15.
----------------------------	---

### 7.3.2 MAC Address

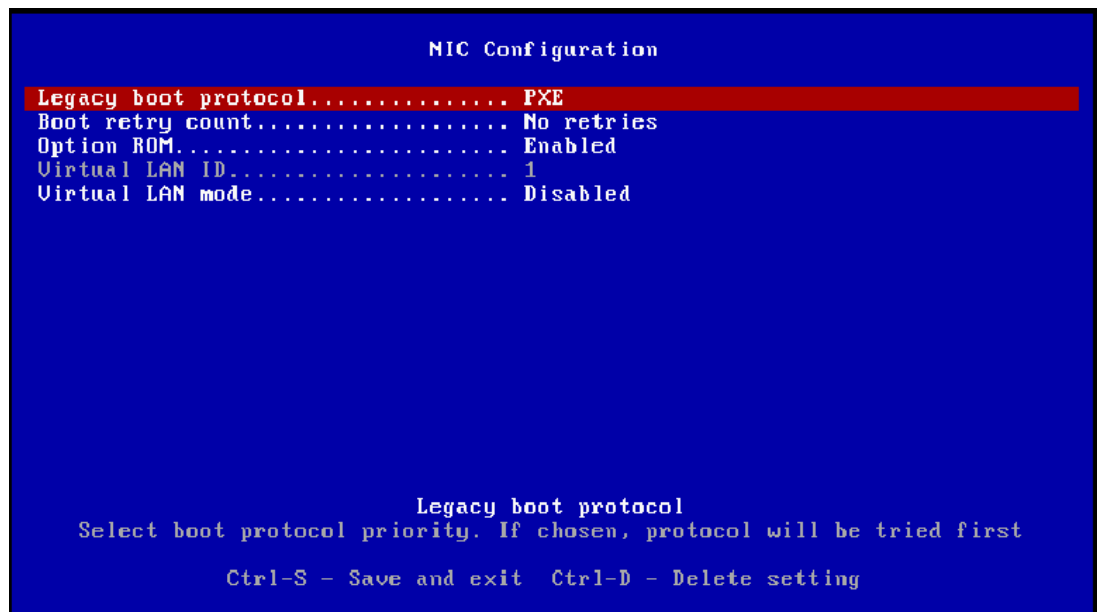
<b>Location:</b>	System setup/Port main configurations
<b>Description:</b>	Permanent MAC address assigned during manufacturing
<b>Configurable:</b>	No

## 7.4 NIC Configuration

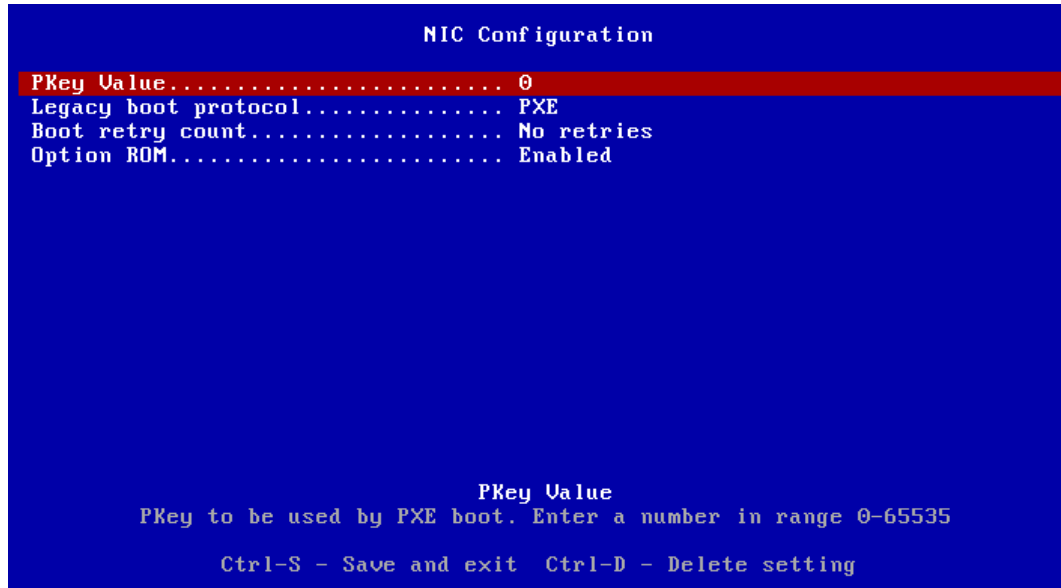
In the following menu, you can set the following options:

- [Legacy Boot Protocol](#)
- [Boot Retry Count](#)
- [PKey Value](#)
- [Wake on LAN](#)
- [Option ROM](#)
- [Virtual LAN ID](#)
- [Virtual LAN Mode](#)

**Figure 8: Ethernet NIC Configuration**



**Figure 9: InfiniBand NIC Configuration**



### 7.4.1 Legacy Boot Protocol

<b>Location:</b>	System setup/Port main configurations/NIC Configuration
<b>Description:</b>	Use a non-UEFI network boot protocol. The chosen protocol is tried first; if boot fails the other protocol will be used. <b>Notes:</b> 1. If set to NONE, the boot will be skipped on this port. 2. IF all the ports are set as NONE, a BEV entry is not registered.
<b>Configurable:</b>	Yes – built-in options
<b>Persistency:</b>	Persistent through AC cycle
<b>Available options:</b>	1. None – no PXE boot, no iSCSI boot 2. PXE – PXE first and if failed try iSCSI 3. iSCSI – iSCSI first and if failed try PXE

### 7.4.2 PKey Value

<b>Location:</b>	System setup/Port main configurations/NIC Configuration
<b>Description:</b>	PKey value to be used when booting IPoIB
<b>Configurable:</b>	Yes
<b>Persistency:</b>	Persistent through AC cycle
<b>Available options:</b>	0-65535 0 – the default PKey value

### 7.4.3 Boot Retry Count

<b>Location:</b>	System setup/Port main configurations/NIC Configuration
<b>Description:</b>	The number of retries to attempt in case of a boot failure.

<b>Configurable:</b>	Yes – built-in options
<b>Persistency:</b>	Persistent through AC cycle
<b>Available options:</b>	<ul style="list-style-type: none"> <li>0. No retries</li> <li>1. Retry</li> <li>2. Retries</li> <li>3. Retries</li> <li>4. Retries</li> <li>5. Retries</li> <li>6. Retries</li> <li>7. Indefinite Retries</li> </ul>

#### 7.4.4 Wake on LAN

<b>Location:</b>	System setup/Port main configurations/NIC Configuration
<b>Description:</b>	Status of Wake on LAN feature. When set, it enables the server to be powered using an in-band magic packet. Only valid for adapters that support Wake on LAN.
<b>Configurable:</b>	Yes – built-in options
<b>Persistency:</b>	Persistent through AC cycle
<b>Available options:</b>	<ul style="list-style-type: none"> <li>1. Enabled</li> <li>2. Disabled</li> </ul>

#### 7.4.5 Option ROM



**NOTE:** *Option ROM* menu is applicable to ConnectX@-3/ConnectX@-3 Pro adapter cards only.

<b>Location:</b>	System setup/Port main configurations/NIC Configuration
<b>Description:</b>	Controls the enablement of legacy Boot Protocols in the boot legacy pro. If disabled, no legacy boot protocol is chosen. When set, the boot protocol will be chosen by “legacy boot protocol” attribute.
<b>Configurable:</b>	Yes – built-in options
<b>Persistency:</b>	Persistent through AC cycle
<b>Reboot required:</b>	Yes – reboot is needed in order for this change to apply
<b>Available options:</b>	<ul style="list-style-type: none"> <li>1. Enabled</li> <li>2. Disabled</li> </ul>

#### 7.4.6 Virtual LAN ID

<b>Location:</b>	System setup/Port main configurations/NIC Configuration
<b>Description:</b>	Uses the VLAN tag with the selected boot protocol.

<b>Configurable:</b>	Yes – via input – If virtual LAN mode is enabled
<b>Value restrictions:</b>	The minimum integer value is 1 and Maximum integer value is 4094.

### 7.4.7 Virtual LAN Mode

<b>Location:</b>	System setup/Port main configurations/NIC Configuration
<b>Description:</b>	Enable/Disable VLAN tagging on the selected boot protocol.
<b>Configurable:</b>	Yes – built-in options
<b>Persistency:</b>	Persistent through AC cycle
<b>Available options:</b>	1. Enabled 2. Disabled

## 7.5 iSCSI General Parameters

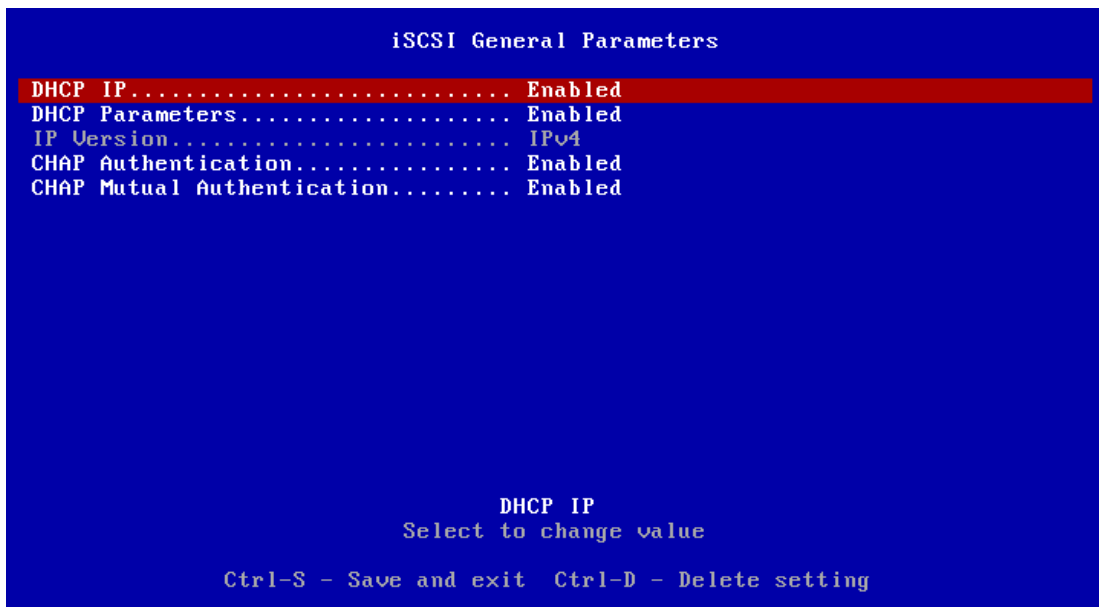


**NOTE:** *iSCSI General Parameters* menu is applicable to ConnectX®-3/ConnectX®-3 Pro adapter cards only.

In the following menu, you can set the following options:

- [DHCP IP](#)
- [DHCP Parameters](#)
- [IP Version](#)
- [CHAP Authentication](#)
- [CHAP Mutual Authentication](#)

**Figure 10: iSCSI General Parameters**





### 7.5.1 DHCP IP

<b>Location:</b>	System setup/Port main configurations/iSCSI Configuration/iSCSI General Parameters
<b>Description:</b>	When the DHCP IP is enabled, the initiator and target's IP, netmask, gateway and DNS will be taken from DHCP instead of from the menu.
<b>Configurable:</b>	Yes

### 7.5.2 DHCP Parameters

<b>Location:</b>	System setup/Port main configurations/iSCSI Configuration/iSCSI General Parameters
<b>Description:</b>	When the DHCP IP and DHCP Parameters are enabled, all the initiator and target's parameters are taken from DHCP instead of from the menu.
<b>Configurable:</b>	Yes

### 7.5.3 IP Version

<b>Location:</b>	System setup/Port main configurations/iSCSI Configuration/iSCSI General Parameters
<b>Description:</b>	Specifies whether IPv4 or IPv6 network addressing will be used for iSCSI initiator and targets
<b>Configurable:</b>	No

### 7.5.4 CHAP Authentication

<b>Location:</b>	System setup/Port main configurations/iSCSI Configuration/iSCSI General Parameters
<b>Description:</b>	Enables CHAP Authentication for iSCSI initiator.
<b>Configurable:</b>	Yes

### 7.5.5 CHAP Mutual Authentication

<b>Location:</b>	System setup/Port main configurations/iSCSI Configuration/iSCSI General Parameters
<b>Description:</b>	Enables mutual CHAP authentication between the iSCSI initiator and target
<b>Configurable:</b>	Yes

## 7.6 iSCSI Initiator Parameters

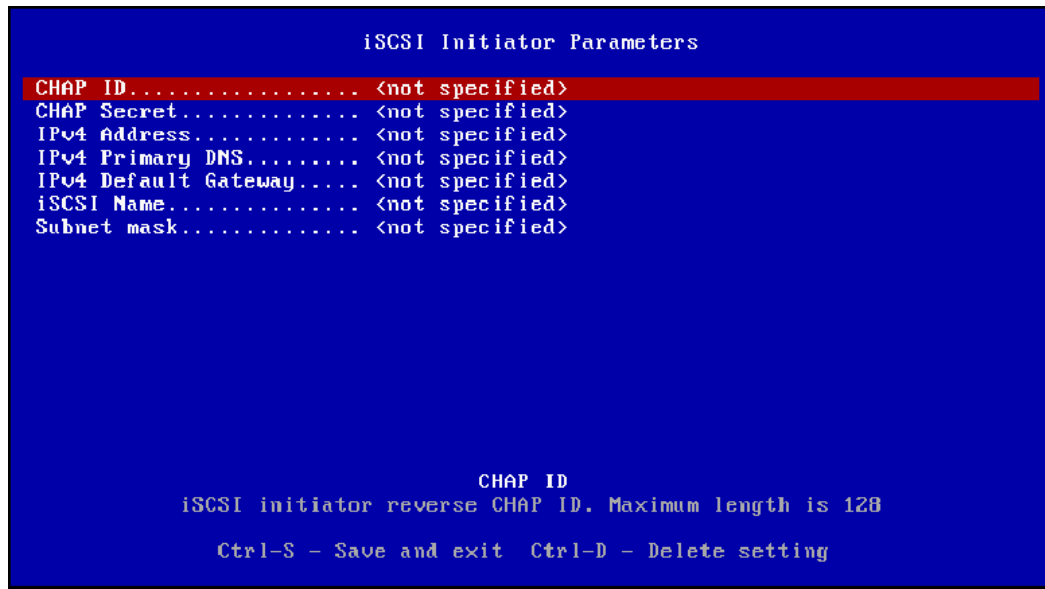


**NOTE:** *iSCSI Initiator Parameters* menu is applicable to ConnectX®-3/ConnectX®-3 Pro adapter cards only.

In the following menu, you can set the following options:

- [CHAP ID](#)
- [CHAP Secret](#)
- [IPv4 Address](#)
- [IPv4 Primary DNS](#)
- [IPv4 Default Gateway](#)
- [iSCSI Name](#)
- [Subnet Mask](#)

**Figure 11: iSCSI Initiator Parameters**



### 7.6.1 CHAP ID

<b>Location:</b>	System setup/Port main configurations/iSCSI Configuration/iSCSI Initiator Parameters
<b>Description:</b>	The iSCSI initiator Challenge-Handshake Authentication Protocol (CHAP) ID
<b>Configurable:</b>	Yes – via input
<b>Persistency:</b>	Persistent through AC cycle
<b>Effects:</b>	If the Connect and the CHAP Mutual Authentication are enabled – This will be the reverse username used for the iSCSI initiator Challenge-Handshake Authentication Protocol.
<b>Value restrictions:</b>	Maximum string length is 128.

## 7.6.2 CHAP Secret

<b>Location:</b>	System setup/Port main configurations/iSCSI Configuration/iSCSI Initiator Parameters
<b>Description:</b>	The iSCSI initiator Challenge-Handshake Authentication Protocol (CHAP) secret (password).
<b>Configurable:</b>	Yes – via input
<b>Persistency:</b>	Persistent through AC cycle
<b>Effects:</b>	If the Connect and the CHAP Mutual Authentication are enabled – This will be the reverse password used for the iSCSI initiator Challenge-Handshake Authentication Protocol.
<b>Value restrictions:</b>	String length should be 0 or 12 to 16

## 7.6.3 IPv4 Address

<b>Location:</b>	System setup/Port main configurations/iSCSI Configuration/iSCSI Initiator Parameters
<b>Description:</b>	iSCSI initiator's IPv4 address
<b>Configurable:</b>	Yes – via input
<b>Persistency:</b>	Persistent through AC cycle
<b>Effects:</b>	If the legacy boot protocol is iSCSI – This will be set as the IP address of the initiator.
<b>Value restrictions:</b>	Should be in IPv4 format

## 7.6.4 IPv4 Primary DNS

<b>Location:</b>	System setup/Port main configurations/iSCSI Configuration/iSCSI Initiator Parameters
<b>Description:</b>	The iSCSI initiator Primary DNS IP Address.
<b>Configurable:</b>	Yes – via input
<b>Persistency:</b>	Persistent through AC cycle
<b>Effects:</b>	If the legacy boot protocol is iSCSI – This will be set as the DNS for the IP address of the initiator.
<b>Value restrictions:</b>	Should be in IPv4 format

## 7.6.5 IPv4 Default Gateway

<b>Location:</b>	System setup/Port main configurations/iSCSI Configuration/iSCSI Initiator Parameters
<b>Description:</b>	The iSCSI initiator default Gateway IP address.
<b>Configurable:</b>	Yes – via input
<b>Persistency:</b>	Persistent through AC cycle
<b>Effects:</b>	If the legacy boot protocol is iSCSI – This will be set as the default gateway IP address of the initiator.

<b>Value restrictions:</b>	Should be in IPv4 format
----------------------------	--------------------------

### 7.6.6 iSCSI Name

<b>Location:</b>	System setup/Port main configurations/iSCSI Configuration/iSCSI Initiator Parameters
<b>Description:</b>	The initiator's iSCSI Qualified Name (IQN).
<b>Configurable:</b>	Yes – via input
<b>Persistency:</b>	Persistent through AC cycle
<b>Effects:</b>	If the legacy boot protocol is iSCSI – This will be set as the iSCSI Qualified Name of the initiator.
<b>Value restrictions:</b>	Maximum string length is 223

### 7.6.7 Subnet Mask

<b>Location:</b>	System setup/Port main configurations/iSCSI Configuration/iSCSI Initiator Parameters
<b>Description:</b>	The iSCSI initiator Subnet Mask for an IPv4 initiator configuration.
<b>Configurable:</b>	Yes – via input
<b>Persistency:</b>	Persistent through AC cycle
<b>Effects:</b>	If the legacy boot protocol is iSCSI – This will be set as the subnet mask for the IP address of the initiator.
<b>Value restrictions:</b>	Should be in IPv4 format

## 7.7 iSCSI First Target Parameters



**NOTE:** *iSCSI First Target Parameters* menu is applicable to ConnectX@-3/ConnectX@-3 Pro adapter cards only.

In the following menu, you can set the following options:

- [Boot LUN](#)
- [Connect](#)
- [iSCSI Name](#)
- [CHAP ID](#)
- [CHAP Secret](#)
- [IP Address](#)
- [TCP Port](#)

```

iSCSI First target Parameters
Boot LUN..... 0
Connect..... Disabled
iSCSI Name..... <not specified>
CHAP ID..... <not specified>
CHAP Secret..... <not specified>
IP Address..... <not specified>
TCP Port..... 3261

                                CHAP ID
First iSCSI storage target CHAP ID. Maximum length is 128

Ctrl-S - Save and exit Ctrl-D - Delete setting
    
```

### 7.7.1 Boot LUN

<b>Location:</b>	System setup/Port main configurations/iSCSI Configuration/iSCSI First target Parameters
<b>Description:</b>	The boot Logical Unit Number (LUN) on the first iSCSI storage target.
<b>Configurable:</b>	Yes – via input
<b>Persistency:</b>	Persistent through AC cycle
<b>Effects:</b>	If the legacy boot protocol is iSCSI and Connect is enabled – This will be the boot LUN in the root path for the first target.
<b>Value restrictions:</b>	The minimum integer value is 0 and the maximum is 18446744073709551615.



## 7.7.2 Connect

<b>Location:</b>	System setup/Port main configurations/iSCSI Configuration/iSCSI First target Parameters
<b>Description:</b>	Enable/Disable connecting to the first iSCSI target. This will be ignored if both DHCP IP and DHCP Parameters are enabled in iSCSI general parameters.
<b>Configurable:</b>	Yes – built-in options
<b>Persistency:</b>	Persistent through AC cycle
<b>Available options:</b>	1. Enabled 2. Disabled

## 7.7.3 iSCSI Name

<b>Location:</b>	System setup/Port main configurations/iSCSI Configuration/iSCSI First target Parameters
<b>Description:</b>	The iSCSI Qualified Name (IQN) of the first target
<b>Configurable:</b>	Yes – via input
<b>Persistency:</b>	Persistent through AC cycle
<b>Effects:</b>	If the legacy boot protocol is iSCSI and Connect is enabled – This will be the iSCSI Qualified name in the root path for the first target.
<b>Value restrictions:</b>	Maximum string length is 223

## 7.7.4 CHAP ID

<b>Location:</b>	System setup/Port main configurations/iSCSI Configuration/iSCSI First target Parameters
<b>Description:</b>	The first iSCSI storage target Challenge-Handshake Authentication Protocol (CHAP) ID.
<b>Configurable:</b>	Yes – via input
<b>Persistency:</b>	Persistent through AC cycle
<b>Effects:</b>	If the Connect and the CHAP Authentication are enabled – This will be the username used for the first target Challenge-Handshake Authentication Protocol.
<b>Value restrictions:</b>	Maximum string length is 128.

## 7.7.5 CHAP Secret

<b>Location:</b>	System setup/Port main configurations/iSCSI Configuration/iSCSI First target Parameters
<b>Description:</b>	The Challenge-Handshake Authentication Protocol secret (CHAP password) of the first iSCSI storage target.
<b>Configurable:</b>	Yes – via input
<b>Persistency:</b>	Persistent through AC cycle

<b>Effects:</b>	If the Connect and the CHAP Authentication are enabled – This will be the password used for the first target Challenge-Handshake Authentication Protocol.
<b>Value restrictions:</b>	String length should be 0 or 12 to 16

### 7.7.6 IP Address

<b>Location:</b>	System setup/Port main configurations/iSCSI Configuration/iSCSI First target Parameters
<b>Description:</b>	The IP address of the first iSCSI target
<b>Configurable:</b>	Yes – via input
<b>Persistency:</b>	Persistent through AC cycle
<b>Effects:</b>	If the legacy boot protocol is iSCSI and Connect is enabled – This will be the IP address in the root path for the first target.
<b>Value restrictions:</b>	Should be in IPv4 format

### 7.7.7 TCP Port

<b>Location:</b>	System setup/Port main configurations/iSCSI Configuration/iSCSI First target Parameters
<b>Description:</b>	TCP Port number of first iSCSI target
<b>Configurable:</b>	Yes – via input
<b>Persistency:</b>	Persistent through AC cycle
<b>Effects:</b>	If the legacy boot protocol is iSCSI and Connect is enabled – This will be the TCP Port in the root path for the first target.
<b>Value restrictions:</b>	The minimum integer value is 1, and the maximum is 65535.



## 8 HII System Settings Configuration Options

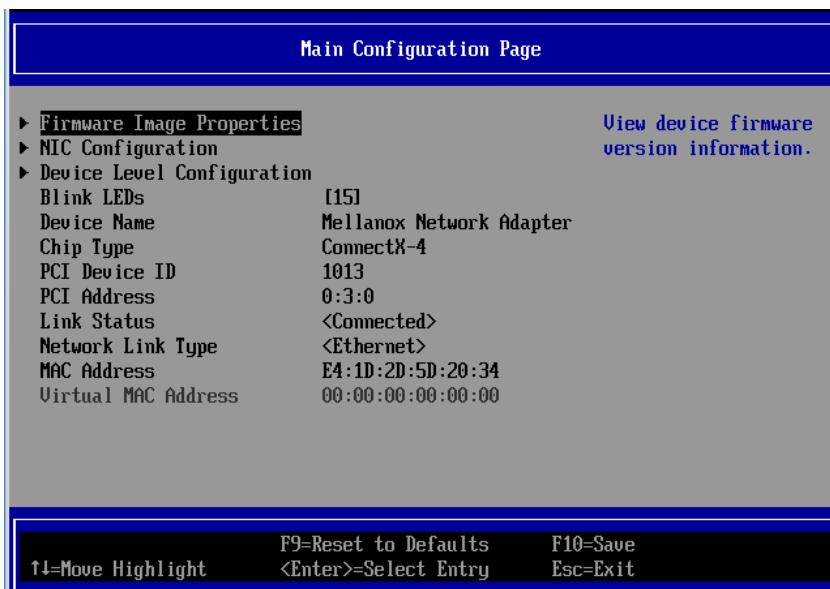
Below are listed the attributes shown in varies HII menus.

### 8.1 Main Configuration Page

In the following menu, you can see the following options:

- [Blink LEDs](#)
- [Device Name](#)
- [Chip Type](#)
- [PCI Device ID](#)
- [PCI Address](#)
- [Link Status](#)
- [Network Link Type](#)

**Figure 12: Main Configuration Form**



#### 8.1.1 Blink LEDs



**NOTE:** Blink LEDs will not appear in the boot menu if the feature is not supported by the firmware.

<b>Location:</b>	Main Configuration Form
<b>Description:</b>	Specifies the number of seconds the LEDs on physical network port should blink to assist with port identification. Only valid for adapters with blink LEDs.
<b>Configurable:</b>	Yes – via input

<b>Persistency:</b>	Valid only for current cycle
<b>Reboot required:</b>	No
<b>Available options:</b>	0-15 sec

### 8.1.2 Device Name

<b>Location:</b>	Main Configuration Form
<b>Description:</b>	The device's product name
<b>Configurable:</b>	No

### 8.1.3 Chip Type

<b>Location:</b>	Main Configuration Form
<b>Description:</b>	Specifies the chip type
<b>Configurable:</b>	No

### 8.1.4 PCI Device ID

<b>Location:</b>	Main Configuration Form
<b>Description:</b>	The PCI Device ID of the controller
<b>Configurable:</b>	No

### 8.1.5 PCI Address

<b>Location:</b>	Main Configuration Form
<b>Description:</b>	Specifies the BIOS assigned PCI Bus:Device:Function identifier of the card
<b>Configurable:</b>	No

### 8.1.6 Link Status

<b>Location:</b>	Main Configuration Form
<b>Description:</b>	Displays current link status on port
<b>Configurable:</b>	No

### 8.1.7 Network Link Type



**NOTE:** Network Link Type will not appear in the boot menu if the feature is not supported by the firmware.

<b>Location:</b>	Main Configuration Form
<b>Description:</b>	Allows user to manually choose link type on selected VPI devices
<b>Configurable:</b>	Yes – via input
<b>Persistency:</b>	Persistent through AC cycle

<b>Reboot required:</b>	Yes – reboot is needed in order for this change to apply
<b>Available options:</b>	Ethernet/InfiniBand/VPI

### 8.1.8 MAC Address

<b>Location:</b>	Main Configuration Form
<b>Description:</b>	Permanent MAC address assigned during manufacturing
<b>Configurable:</b>	No

### 8.1.9 Virtual MAC Address

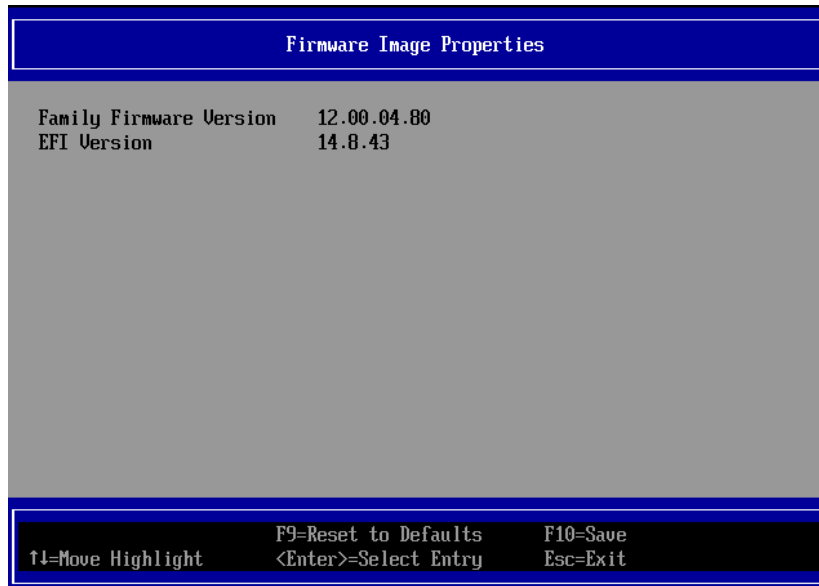
<b>Location:</b>	Main Configuration Form
<b>Description:</b>	Displays device's virtual MAC address
<b>Configurable:</b>	No

## 8.2 Firmware Image Properties

In the following menu, you can set the following options:

- [Family Firmware Version](#)
- [EFI Version](#)

**Figure 13: Firmware Image Properties Menu**



### 8.2.1 Family Firmware Version

<b>Location:</b>	Main Configuration Form /Firmware Image Properties
<b>Description:</b>	Device's firmware version information.
<b>Configurable:</b>	No

### 8.2.2 EFI Version

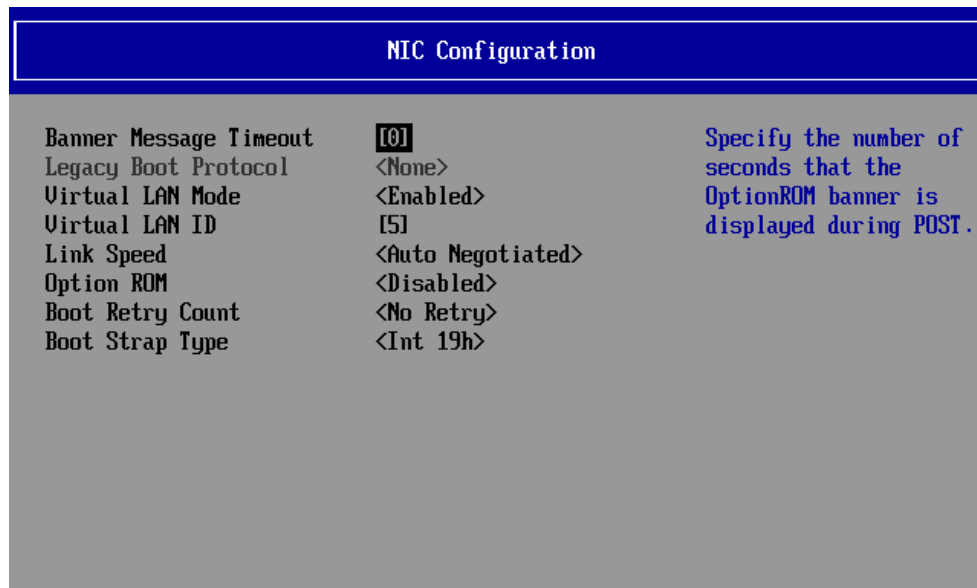
<b>Location:</b>	Main Configuration Form /Firmware Image Properties
<b>Description:</b>	Device's UEFI driver version information.
<b>Configurable:</b>	No

## 8.3 NIC Configuration

In the following menu, you can set the following options:

- [Banner Message Timeout](#)
- [Legacy Boot Protocol](#)
- [Virtual LAN Mode](#)
- [Virtual LAN ID](#)
- [Link Speed](#)
- [Option ROM](#)
- [Boot Retry Count](#)
- [Wake on LAN](#)

**Figure 14: Ethernet NIC Configuration**



### 8.3.1 Banner Message Timeout

<b>Location:</b>	Main Configuration Form /NIC Configuration
<b>Description:</b>	Defines the Banner's timeout
<b>Configurable:</b>	Yes – via input – If virtualization mode is SR-IOV
<b>Persistency:</b>	Persistent through AC cycle
<b>Reboot required:</b>	Yes – reboot is needed in order for this change to apply
<b>Available options:</b>	0-14 sec

### 8.3.2 Legacy Boot Protocol

<b>Location:</b>	Main Configuration Form /NIC Configuration
<b>Description:</b>	Use a non-UEFI network boot protocol.

	The chosen protocol is tried first; if boot fails the other protocol will be used.
<b>Configurable:</b>	Yes – built-in options
<b>Persistency:</b>	Persistent through AC cycle
<b>Available options:</b>	4. None – no PXE boot, no iSCSI boot 5. PXE – PXE first and if failed try iSCSI 6. iSCSI – iSCSI first and if failed try PXE

### 8.3.3 Virtual LAN Mode

<b>Location:</b>	Main Configuration Form /NIC Configuration
<b>Description:</b>	Enable/Disable VLAN tagging on the selected boot protocol.
<b>Configurable:</b>	Yes – built-in options
<b>Persistency:</b>	Persistent through AC cycle
<b>Available options:</b>	1. Enabled 2. Disabled

### 8.3.4 Virtual LAN ID

<b>Location:</b>	Main Configuration Form /NIC Configuration
<b>Description:</b>	Uses the VLAN tag with the selected boot protocol.
<b>Configurable:</b>	Yes – via input – If virtual LAN mode is enabled
<b>Value restrictions:</b>	The minimum integer value is 1 and Maximum integer value is 4094.

### 8.3.5 Link Speed

<b>Location:</b>	Main Configuration Form /NIC Configuration
<b>Description:</b>	Defines link working speed
<b>Configurable:</b>	Currently no, only exposes Auto Negotiated state.
<b>Value restrictions:</b>	-

### 8.3.6 Option ROM

<b>Location:</b>	Main Configuration Form /NIC Configuration
<b>Description:</b>	Controls the enablement of legacy Boot Protocols in the Option ROM. If disabled, no legacy boot protocol is chosen. When set, the boot protocol will be chosen by “Boot legacy protocol” attribute.
<b>Configurable:</b>	Yes – built-in options
<b>Persistency:</b>	Persistent through AC cycle
<b>Reboot required:</b>	Yes – reboot is needed in order for this change to apply
<b>Available options:</b>	1. Enabled 2. Disabled

### 8.3.7 Boot Retry Count

<b>Location:</b>	Main Configuration Form /NIC Configuration
<b>Description:</b>	The number of retries to attempt in case of a boot failure.
<b>Configurable:</b>	Yes – built-in options
<b>Persistency:</b>	Persistent through AC cycle
<b>Available options:</b>	<ul style="list-style-type: none"> <li>0. No retries</li> <li>1. Retry</li> <li>2. Retries</li> <li>3. Retries</li> <li>4. Retries</li> <li>5. Retries</li> <li>6. Retries</li> <li>7. Indefinite Retries</li> </ul>

### 8.3.8 Wake on LAN

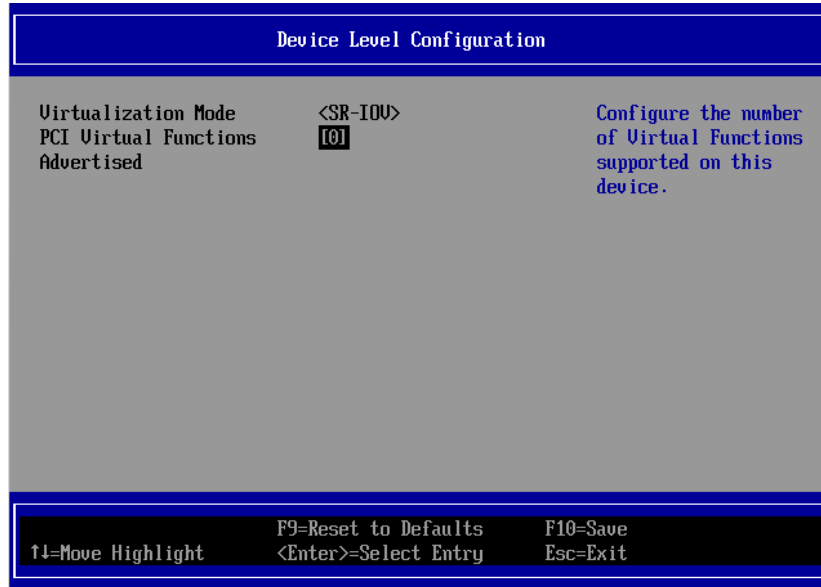
<b>Location:</b>	Main Configuration Form /NIC Configuration
<b>Description:</b>	Status of Wake on LAN feature. When set, it enables the server to be powered using an in-band magic packet. Only valid for adapters that support Wake on LAN.
<b>Configurable:</b>	Yes – built-in options
<b>Persistency:</b>	Persistent through AC cycle
<b>Available options:</b>	<ul style="list-style-type: none"> <li>1. Enabled</li> <li>2. Disabled</li> </ul>

## 8.4 Device Level Configuration

In the following menu, you can set the following options:

- [Virtualization Mode](#)
- [PCI Virtual Functions Advertised](#)

**Figure 15: Device Level Configuration**



### 8.4.1 Virtualization Mode

<b>Location:</b>	Main Configuration Form /Device Level Configuration
<b>Description:</b>	Specifies the type of virtualization used by the controller on all ports. Only valid for adapters that support SR-IOV virtualization mode.
<b>Configurable:</b>	Yes – built-in options
<b>Persistency:</b>	Persistent through AC cycle
<b>Reboot required:</b>	Yes – reboot is needed in order for this change to apply
<b>Available options:</b>	7. None 8. SR-IOV

### 8.4.2 PCI Virtual Functions Advertised

<b>Location:</b>	Main Configuration Form /Device Level Configuration
<b>Description:</b>	The number of virtual functions advertised and usable by the driver. Only valid for adapters that support SR-IOV virtualization mode.
<b>Configurable:</b>	Yes – via input – If virtualization mode is SR-IOV
<b>Persistency:</b>	Persistent through AC cycle
<b>Reboot required:</b>	Yes – reboot is needed in order for this change to apply
<b>Value restrictions:</b>	Minimum integer value is 0. Maximum integer value is the value supported by the firmware installed.

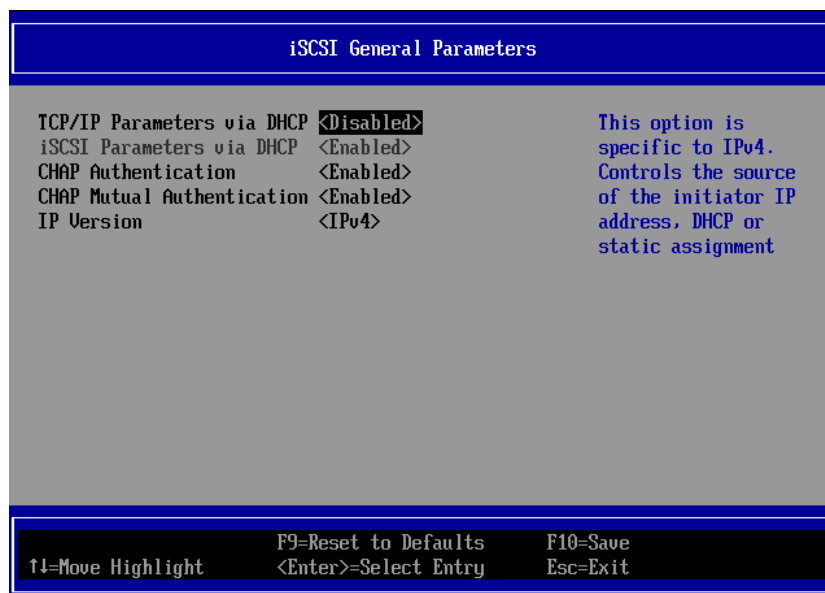


## 8.5 iSCSI General Parameters

In the following menu, you can set the following options:

- [TCP/IP Parameters via DHCP](#)
- [iSCSI Parameters via DHCP](#)
- [CHAP Authentication](#)
- [CHAP Mutual Authentication](#)
- [IP Version](#)

**Figure 16: iSCSI General Parameters**



### 8.5.1 TCP/IP Parameters via DHCP

<b>Location:</b>	Main Configuration Form /iSCSI Configuration/iSCSI General Parameters
<b>Description:</b>	When the TCP/IP Parameters via DHCP is enabled, the initiator and target's IP, netmask, gateway and DNS will be taken from DHCP instead of from the menu.
<b>Configurable:</b>	Yes

### 8.5.2 iSCSI Parameters via DHCP

<b>Location:</b>	System setup/Port main configurations/iSCSI Configuration/iSCSI General Parameters
<b>Description:</b>	When iSCSI Parameters via DHCP are enabled, all the initiator and target's parameters are taken from DHCP instead of from the menu.
<b>Configurable:</b>	Yes, if TCP/IP Parameters via DHCP is enabled.

### 8.5.3 CHAP Authentication

<b>Location:</b>	System setup/Port main configurations/iSCSI Configuration/iSCSI General Parameters
<b>Description:</b>	Enables CHAP Authentication for iSCSI initiator.
<b>Configurable:</b>	Yes

### 8.5.4 CHAP Mutual Authentication

<b>Location:</b>	System setup/Port main configurations/iSCSI Configuration/iSCSI General Parameters
<b>Description:</b>	Enables mutual CHAP authentication between the iSCSI initiator and target
<b>Configurable:</b>	Yes

### 8.5.5 IP Version

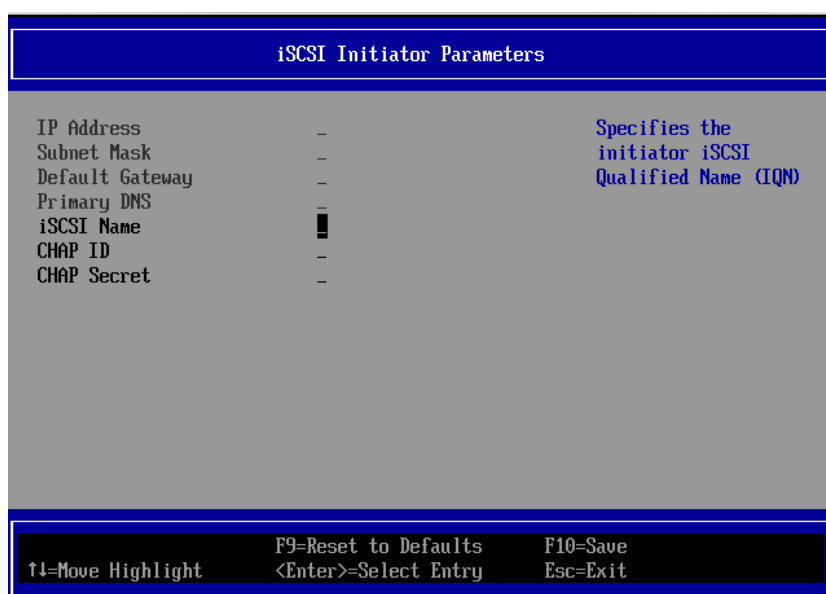
<b>Location:</b>	System setup/Port main configurations/iSCSI Configuration/iSCSI General Parameters
<b>Description:</b>	Specifies whether IPv4 or IPv6 network addressing will be used for iSCSI initiator and targets
<b>Configurable:</b>	No

## 8.6 iSCSI Initiator Parameters

In the following menu, you can set the following options:

- [CHAP ID](#)
- [CHAP Secret](#)
- [IPv4 Address](#)
- [IPv4 Primary DNS](#)
- [IPv4 Default Gateway](#)
- [iSCSI Name](#)
- [Subnet Mask](#)

**Figure 17: iSCSI Initiator Parameters**



### 8.6.1 CHAP ID

<b>Location:</b>	System setup/Port main configurations/iSCSI Configuration/iSCSI Initiator Parameters
<b>Description:</b>	The iSCSI initiator Challenge-Handshake Authentication Protocol (CHAP) ID
<b>Configurable:</b>	Yes – via input
<b>Persistency:</b>	Persistent through AC cycle
<b>Effects:</b>	If the Connect and the CHAP Mutual Authentication are enabled – This will be the reverse username used for the iSCSI initiator Challenge-Handshake Authentication Protocol.
<b>Value restrictions:</b>	Maximum string length is 128.

### 8.6.2 CHAP Secret

<b>Location:</b>	System setup/Port main configurations/iSCSI Configuration/iSCSI Initiator Parameters
<b>Description:</b>	The iSCSI initiator Challenge-Handshake Authentication Protocol (CHAP) secret (password).
<b>Configurable:</b>	Yes – via input
<b>Persistency:</b>	Persistent through AC cycle
<b>Effects:</b>	If the Connect and the CHAP Mutual Authentication are enabled – This will be the reverse password used for the iSCSI initiator Challenge-Handshake Authentication Protocol.
<b>Value restrictions:</b>	String length should be 0 or 12 to 16

### 8.6.3 IPv4 Address

<b>Location:</b>	System setup/Port main configurations/iSCSI Configuration/iSCSI Initiator Parameters
<b>Description:</b>	iSCSI initiator's IPv4 address
<b>Configurable:</b>	Yes – via input
<b>Persistency:</b>	Persistent through AC cycle
<b>Effects:</b>	If the legacy boot protocol is iSCSI – This will be set as the IP address of the initiator.
<b>Value restrictions:</b>	Should be in IPv4 format

### 8.6.4 IPv4 Primary DNS

<b>Location:</b>	System setup/Port main configurations/iSCSI Configuration/iSCSI Initiator Parameters
<b>Description:</b>	The iSCSI initiator Primary DNS IP Address.
<b>Configurable:</b>	Yes – via input
<b>Persistency:</b>	Persistent through AC cycle
<b>Effects:</b>	If the legacy boot protocol is iSCSI – This will be set as the DNS for the IP address of the initiator.
<b>Value restrictions:</b>	Should be in IPv4 format

### 8.6.5 IPv4 Default Gateway

<b>Location:</b>	System setup/Port main configurations/iSCSI Configuration/iSCSI Initiator Parameters
<b>Description:</b>	The iSCSI initiator default Gateway IP address.
<b>Configurable:</b>	Yes – via input
<b>Persistency:</b>	Persistent through AC cycle
<b>Effects:</b>	If the legacy boot protocol is iSCSI – This will be set as the default gateway IP address of the initiator.
<b>Value restrictions:</b>	Should be in IPv4 format

### 8.6.6 iSCSI Name

<b>Location:</b>	System setup/Port main configurations/iSCSI Configuration/iSCSI Initiator Parameters
<b>Description:</b>	The initiator's iSCSI Qualified Name (IQN).
<b>Configurable:</b>	Yes – via input
<b>Persistency:</b>	Persistent through AC cycle
<b>Effects:</b>	If the legacy boot protocol is iSCSI – This will be set as the iSCSI Qualified Name of the initiator.
<b>Value restrictions:</b>	Maximum string length is 223

### 8.6.7 Subnet Mask

<b>Location:</b>	System setup/Port main configurations/iSCSI Configuration/iSCSI Initiator Parameters
<b>Description:</b>	The iSCSI initiator Subnet Mask for an IPv4 initiator configuration.
<b>Configurable:</b>	Yes – via input
<b>Persistency:</b>	Persistent through AC cycle
<b>Effects:</b>	If the legacy boot protocol is iSCSI – This will be set as the subnet mask for the IP address of the initiator.
<b>Value restrictions:</b>	Should be in IPv4 format

## 8.7 iSCSI First Target Parameters

In the following menu, you can set the following options:

- [Boot LUN](#)
- [Connect](#)
- [iSCSI Name](#)
- [CHAP ID](#)
- [CHAP Secret](#)
- [IP Address](#)
- [TCP Port](#)

**Figure 18: iSCSI First Target Parameters**



### 8.7.1 Boot LUN

<b>Location:</b>	System setup/Port main configurations/iSCSI Configuration/iSCSI First target Parameters
<b>Description:</b>	The boot Logical Unit Number (LUN) on the first iSCSI storage target.
<b>Configurable:</b>	Yes – via input
<b>Persistency:</b>	Persistent through AC cycle
<b>Effects:</b>	If the legacy boot protocol is iSCSI and Connect is enabled – This will be the boot LUN in the root path for the first target.
<b>Value restrictions:</b>	The minimum integer value is 0 and the maximum is 18446744073709551615.

### 8.7.2 Connect

<b>Location:</b>	System setup/Port main configurations/iSCSI Configuration/iSCSI First target Parameters
<b>Description:</b>	Enable/Disable connecting to the first iSCSI target. This will be ignored if both DHCP IP and DHCP Parameters are enabled in iSCSI general parameters.
<b>Configurable:</b>	Yes – built-in options
<b>Persistency:</b>	Persistent through AC cycle
<b>Available options:</b>	1. Enabled 2. Disabled

### 8.7.3 iSCSI Name

<b>Location:</b>	System setup/Port main configurations/iSCSI Configuration/iSCSI First target Parameters
<b>Description:</b>	The iSCSI Qualified Name (IQN) of the first target
<b>Configurable:</b>	Yes – via input
<b>Persistency:</b>	Persistent through AC cycle
<b>Effects:</b>	If the legacy boot protocol is iSCSI and Connect is enabled – This will be the iSCSI Qualified name in the root path for the first target.
<b>Value restrictions:</b>	Maximum string length is 223

### 8.7.4 CHAP ID

<b>Location:</b>	System setup/Port main configurations/iSCSI Configuration/iSCSI First target Parameters
<b>Description:</b>	The first iSCSI storage target Challenge-Handshake Authentication Protocol (CHAP) ID.
<b>Configurable:</b>	Yes – via input
<b>Persistency:</b>	Persistent through AC cycle
<b>Effects:</b>	If the Connect and the CHAP Authentication are enabled – This will be the username used for the first target Challenge-Handshake Authentication Protocol.
<b>Value restrictions:</b>	Maximum string length is 128.

### 8.7.5 CHAP Secret

<b>Location:</b>	System setup/Port main configurations/iSCSI Configuration/iSCSI First target Parameters
<b>Description:</b>	The Challenge-Handshake Authentication Protocol secret (CHAP password) of the first iSCSI storage target.
<b>Configurable:</b>	Yes – via input
<b>Persistency:</b>	Persistent through AC cycle

<b>Effects:</b>	If the Connect and the CHAP Authentication are enabled – This will be the password used for the first target Challenge-Handshake Authentication Protocol.
<b>Value restrictions:</b>	String length should be 0 or 12 to 16

### 8.7.6 IP Address

<b>Location:</b>	System setup/Port main configurations/iSCSI Configuration/iSCSI First target Parameters
<b>Description:</b>	The IP address of the first iSCSI target
<b>Configurable:</b>	Yes – via input
<b>Persistency:</b>	Persistent through AC cycle
<b>Effects:</b>	If the legacy boot protocol is iSCSI and Connect is enabled – This will be the IP address in the root path for the first target.
<b>Value restrictions:</b>	Should be in IPv4 format

### 8.7.7 TCP Port

<b>Location:</b>	System setup/Port main configurations/iSCSI Configuration/iSCSI First target Parameters
<b>Description:</b>	TCP Port number of first iSCSI target
<b>Configurable:</b>	Yes – via input
<b>Persistency:</b>	Persistent through AC cycle
<b>Effects:</b>	If the legacy boot protocol is iSCSI and Connect is enabled – This will be the TCP Port in the root path for the first target.
<b>Value restrictions:</b>	The minimum integer value is 1, and the maximum is 65535.



## 9 How to Boot

### 9.1 PXE Boot

#### 9.1.1 Prerequisites

- Make sure that your client is connected physically and logically to the server(s)
- The PreBoot drivers images are already programmed on the adapter card
- For InfiniBand ports only: Start the Subnet Manager
- Configure and start the DHCP server
- Configure and start at least one of the services such as: iSCSI

#### 9.1.2 Starting Boot

Boot the client machine and enter BIOS setup to configure “MLNX FlexBoot” to be the first on the boot device priority list.



**NOTE:** On dual-port network adapters, the client first attempts to boot from Port 1. If this fails, it switches to boot from Port 2. Note also that the driver waits up to 10 seconds for port come up and up to 90 seconds to assign an IP from the DHCP server.

If a PreBoot driver was selected through BIOS setup, the client will boot from FlexBoot. The client will display FlexBoot attributes, sense the port protocol – Ethernet or InfiniBand. The port sensing occurs only when the port is connected to a QSFP connector. In case of an InfiniBand port, the client will also wait for port configuration by the Subnet Manager. If auto-sensing protocol fails, the port will be configured as an InfiniBand port.

After configuring the IB/ETH port, the client attempts to connect to the DHCP server to obtain an IP address and the source location of the kernel/OS to boot from.

For ConnectX (InfiniBand):

```
Mellanox FlexBoot v3.4.400
iPXE 1.0.0+ (9ae6) -- Open Source Network Boot Firmware -- http://ipxe.org
Features: HTTP iSCSI DNS TFTP VLAN bzImage COMBOOT ELF MBOOT PXE PXEXT Menu

net0: GUID 00:02:c9:03:00:b7:10:a0 - MAC 02:02:c9:b7:10:a0
Using ConnectIB on PCI00:05.0 (open)
  [Link:down, TX:0 TXE:0 RX:0 RXE:0]
  [Link status: The socket is not connected (http://ipxe.org/38136001)]
Waiting for link-up on net0..... ok
Configuring (net0 02:02:c9:b7:10:a0)..... ok
net0: 31.134.38.52/255.255.0.0
Next server: 31.134.38.7
Filename: pxelinux.0
Root path: /var/lib/tftpboot
tftp://31.134.38.7/pxelinux.0... ok
```

Next, FlexBoot attempts to boot as directed by the DHCP server.

### 9.1.3 How to Boot to ESXi

For instructions on booting to ESXi, refer to the ESXi Installation Guide on VMWare site: <http://pubs.vmware.com/vsphere-55/index.jsp#com.vmware.vsphere.upgrade.doc/GUID-B9DB94CA-4857-458B-B6F1-6A688726AED0.html>

### 9.1.4 How to Boot Using HTTP Script

After performing basic HTTP configuration, add the following lines to the dhcp server configuration file:

```
host uefi24-1 {
hardware ethernet F4:52:14:7A:56:F1 ;
fixed-address 14.7.6.24;
filename "pxe_script_linux";
option vendor-class-identifier "PXEClient";
}

"pxe_script_linux" file:
#!ipxe
dhcp net0
kernel -n vmlinuz http://14.7.6.30/RHEL6.4-x86_64-
DVD1/images/pxeboot/vmlinuz
initrd http://14.7.6.30/RHEL6.4-x86_64-DVD1/images/pxeboot/initrd.img
boot
```

## 9.2 iSCSI

Mellanox FlexBoot enables an iSCSI-boot of an OS located on a remote iSCSI target. It has a built-in iSCSI initiator which can connect to the remote iSCSI target and load from it the kernel and initrd. There are two instances of connection to the remote iSCSI target: the first is for getting the kernel and initrd via FlexBoot, and the second is for loading other parts of the OS via initrd.

If you choose to continue loading the OS (after boot) through the HCA device driver, please verify that the initrd image includes the HCA driver.



**NOTE:** To boot via iSCSI, Flexboot must be selected from the BIOS boot menu (it will be shown as a BEV entry). Do not look for the entry in the BVC table.

### 9.2.1 Installing to iSCSI Target

It is recommended to install to an iSCSI target using the same port performing the following:

1. Connect to the iSCSI target to retrieve various information from it.

Due to the step above, FlexBoot will register the remote target by hooking BIOS interrupt 13.

2. Download the installation image using the same port by supplying the file name in the client's DHCP configuration file along with the root path.

## 9.2.2 Configuring an iSCSI Target in Linux Environment

### 9.2.2.1 Prerequisites

- Make sure that an iSCSI Target is installed on your server side.

You can download and install an iSCSI Target from the following location:

<http://sourceforge.net/projects/iscsitarget/files/iscsitarget/>

- Dedicate a partition on your iSCSI Target on which you will later install the operating system
- Configure your iSCSI Target to work with the partition you dedicated. If, for example, you choose partition `/dev/sda5`, then edit the iSCSI Target configuration file `/etc/ietd.conf` to include the following line under the iSCSI Target iqn line:

```
Lun 0 Path=/dev/sda5,Type=fileio
```

Example of an iSCSI Target iqn line:

```
Target iqn.2007-08.7.3.4.10:iscsiboot
```

- Start your iSCSI Target.

Example:

```
host1# /etc/init.d/iscsitarget start
```

### 9.2.2.2 Configuring the DHCP Server to Boot From an iSCSI Target

1. Configure DHCP as described in section “[Preparing the DHCP Server in Linux](#)”.
2. Edit your DHCP configuration file (`/etc/dhcpd.conf`) and add the following lines for the machine(s) you wish to boot from the iSCSI target:

```
Filename "";  
option root-path "iscsi:iscsi_target_ip::::iscsi_target_iqn";
```

The following is an example for configuring an IB/ETH device to boot from an iSCSI target:

```
host host1{ filename "";  
option root-path "iscsi:iscsi_target_ip::::iscsi_target_iqn";  
# For a ConnectX device with ports configured as InfiniBand, comment out#  
the follow- ing line  
# option dhcp-client-identifier =  
ff:00:00:00:00:00:02:00:00:02:c9:00:00:02:c9:03:00:00:10:39;  
  
# For a ConnectX device with ports configured as Ethernet, comment out#  
the following line  
# hardware ethernet 00:02:c9:00:00:bb;  
}
```

## 9.3 Booting from FlexBoot via IPv6

IPv6 boot must be enable it in FlexBoot menu. You can configure it to:

- IPv4 only
- IPv6 only
- IPv4 configuration and then IPv6

```

NIC Configuration
Legacy boot protocol..... iSCSI
Boot retry count..... No retries
IPv4/IPv6 support..... IPv4
Option ROM..... Enabled
Virtual LAN ID..... 3
Virtual LAN mode..... Disabled

IPv4/IPv6 support
Select to change value

Ctrl-S - Save and exit  Ctrl-D - Delete setting

```

### ➤ To boot from FlexBoot via IPv6:

1. Run the RADVD service on a server in the network (preferably the DHCP server) and configure it to send a periodic Router Advertisement.

#### Example:

```

interface eth1
{
  AdvSendAdvert on;
  MinRtrAdvInterval 3;
  MaxRtrAdvInterval 5;
  AdvManagedFlag on;
  AdvOtherConfigFlag off;
  AdvHomeAgentFlag off;

  prefix fd0c::/64 {
    AdvOnLink on;
    AdvAutonomous off;
    AdvRouterAddr off;
  };
};

```

2. Configure the DHCP service.

#### Example:

```

default-lease-time 100;
preferred-lifetime 60;
option dhcp-renewal-time 30;
allow leasequery;
option dhcp6.preference 255;
option dhcp6.rapid-commit;
option dhcp6.bootfile6-url code 59 = string;

subnet6 fd0c::/64 {

```

```
option dhcp6.bootfile-url "tftp://[fdfc::123]/ipv6_script";
option dhcp6.name-servers fdfc::123;
range6 fdfc::140 fdfc::200;
range6 fdfc:: temporary;
}
```

While the `ipv6_script` contents is:

```
#!/ipxe

#echo "Attempting to download linux OS over IPv6..."
kernel tftp://[fdfc::123]/kernel/vmlinuz_new
initrd tftp://[fdfc::123]/kernel/ramdisk_new.gz
imgselect vmlinuz_new
echo "Booting..."
boot
```

or over HTTP:

```
#!/ipxe

#echo "Attempting to download linux OS over IPv6..."
kernel http://[fdfc::123]/kernel/vmlinuz_new
initrd http://[fdfc::123]/kernel/ramdisk_new.gz
imgselect vmlinuz_new
echo "Booting..."
boot
```

## 9.4 Legacy Boot Priority Behavior

The sections below describe various legacy boot priority behaviors based on the protocol used.

### 9.4.1 Legacy Boot Protocol PXE

The client first tries to perform PXE boot and if that fails, it tries iSCSI boot. The client goes to the DHCP to get an IP address. The DHCP server might supply filename (for PXE boot) and root-path (for iSCSI boot) if set by the user.

- If the iSCSI target parameters are taken from the flash, then the root-path retrieved from the DHCP is deleted, and if the 'Connect' is set as **“Enable”** then the values stored in the flash are used (DHCP IP = Enable, DHCP Parameters = Disable).
- If a root-path is supplied from either the DHCP or the flash, the client is connected to the iSCSI target but no boot is performed.
- If a filename is supplied, a PXE boot is performed on the Operating System.
- If PXE boot failed or no filename was supplied, an iSCSI boot is performed to the connected target.

When the legacy boot protocol PXE is selected, the following are not supported:

- DHCP IP = disable
- iSCSI boot with static configurations after PXE boot – Setting all iSCSI parameters from the flash (including IP address)

### 9.4.2 Legacy Boot Protocol iSCSI

The client first tries to perform iSCSI boot and if that fails, it tries PXE boot. Upon iSCSI boot one of the following flows occurs:

- If all iSCSI configuration is taken from the flash, the client waits 25 seconds for the switches to be configured, and then tries to perform an iSCSI boot (hook to target and then boot). If the boot fails, the client exits. (DHCP IP = disable)

Or

1. If only the TCP parameters need to be retrieved from the DHCP (DHCP IP = enable, DHCP Parameters = disable), then the IP address is taken from the DHCP, the root-path retrieved from the DHCP is deleted and if the 'Connect' is set as **“Enable”** then the values stored in the flash are used.
2. Hook to the iSCSI target.
3. Try to boot to the iSCSI target.
4. If iSCSI boot failed and DHCP supplied a filename, try to PXE boot.
5. If PXE boot failed, exit.

When the legacy boot protocol iSCSI is selected, the following is not supported:

- PXE boot after iSCSI boot with static configurations – Setting all iSCSI parameters from the flash (including IP address)

### 9.4.3 CHAP Authentication and CHAP Mutual Authentication

iSCSI boot allows CHAP security option if the following conditions are met:

- If 'Connect' = disable or 'CHAP Authentication' = disable, the server ignores both the CHAP Authentication and CHAP Mutual Authentication
- If 'Connect' = enable and 'CHAP Authentication' = enable, the target CHAP parameters are used
- If 'CHAP Mutual Authentication' = enable, the Initiator CHAP parameters are used

## 10 UEFI PXE Boot

The main differences in UEFI PXE booting is determining the .efi boot file, editing the `grub.cfg` and `dhcpd.conf` files, and setting the 'Boot Mode' to 'UEFI Mode' in the BIOS.

```
>>Start PXE over IPv4, Press [ESC] to EXIT...
  Station IP address is 21.7.7.219
  Server IP address is 21.7.44.13
  NBP filename is uefi/grub.efi
  NBP filesize is 251274 Bytes
  Downloading NBP file...

  Succeed to download NBP file.
```

For further information, please refer to the “*HowTo Configure PXE Server in UEFI Mode for IPoIB Network*” post in the Mellanox Community (<https://community.mellanox.com> → Places → Solutions → PXE)

## Appendix A: Diskless Machines

Mellanox FlexBoot supports booting diskless machines.



**NOTE:** The following configuration instructions apply only to operation systems which do not include an inbox driver, and should be skipped in case an OS with an inbox driver is used.

To enable using an IB/ETH driver, the initrd image must include a device driver module and be configured to load that driver. This can be achieved by adding the device driver module into the initrd image and loading it.

The ‘initrd’ image of some Linux distributions such as SuSE Linux Enterprise Server and Red Hat Enterprise Linux, cannot be edited prior or during the installation process.

If you need to install Linux distributions over Flexboot, please replace your ‘initrd’

images with the images found at: [www.mellanox.com](http://www.mellanox.com) → Products → InfiniBand/VPI Drivers → FlexBoot (Download Tab).

All OSes which doesn't include inbox driver should do the following.

OSes which include the inbox driver should skip these configurations

### A.1 Case I: InfiniBand Ports

The IB driver requires loading the following modules in the specified:

- `ib_addr.ko`
- `ib_core.ko`
- `ib_mad.ko`
- `ib_sa.ko`
- `ib_cm.ko`
- `ib_uverbs.ko`
- `ib_ucm.ko`
- `ib_umad.ko`
- `iw_cm.ko`
- `rdma_cm.ko`
- `rdma_ucm.ko`
- `mlx4_core.ko`
- `mlx4_ib.ko`
- `ib_mthca.ko`
- `ipoib_helper.ko` – this module is *not* required for all OS kernels. Please check the release notes.
- `ib_ipoib.ko`



## A.1.1 Example: Adding an IB Driver to initrd (Linux)

### A.1.1.1 Prerequisites

- The FlexBoot image is already programmed on the HCA card
- The DHCP server is installed, configured and connected to the client machine
- An `initrd` file.
- To add an IB driver into `initrd`, you need to copy the IB modules to the diskless image. Your machine needs to be pre-installed with a Mellanox OFED for Linux ISO image (available for download from [www.mellanox.com](http://www.mellanox.com) → Products → InfiniBand/VPI Drivers → Linux SW/ Drivers) that is appropriate for the kernel version the diskless image will run.

The remainder of this section assumes that Mellanox OFED has been installed on your machine.

### A.1.1.2 Adding the IB Driver to the initrd File



**NOTE:** The following procedure modifies critical files used in the boot procedure. It must be executed by users with expertise in the boot process. Improper application of this procedure may prevent the diskless machine from booting.

1. Back up your current `initrd` file.
2. Make a new working directory and change to it.

```
host1$ mkdir /tmp/initrd_ib  
host1$ cd /tmp/initrd_ib
```

3. Extract the `initrd`.

```
host1$ gzip -dc <initrd image> | cpio -id
```

The `initrd` files are now located at: `/tmp/initrd_ib`

4. Create a directory for the InfiniBand modules and copy them.

```
host1$ mkdir -p /tmp/initrd_ib/lib/modules/ib  
host1$ cd /lib/modules/`uname -r`/updates/kernel/drivers  
host1$ cp infiniband/core/ib_addr.ko /tmp/initrd_ib/lib/modules/ib  
host1$ cp infiniband/core/ib_core.ko /tmp/initrd_ib/lib/modules/ib  
host1$ cp infiniband/core/ib_mad.ko /tmp/initrd_ib/lib/modules/ib  
host1$ cp infiniband/core/ib_sa.ko /tmp/initrd_ib/lib/modules/ib  
host1$ cp infiniband/core/ib_cm.ko /tmp/initrd_ib/lib/modules/ib  
host1$ cp infiniband/core/ib_uverbs.ko /tmp/initrd_ib/lib/modules/ib  
host1$ cp infiniband/core/ib_ucm.ko /tmp/initrd_ib/lib/modules/ib  
host1$ cp infiniband/core/ib_umad.ko /tmp/initrd_ib/lib/modules/ib  
host1$ cp infiniband/core/iw_cm.ko /tmp/initrd_ib/lib/modules/ib  
host1$ cp infiniband/core/rdma_cm.ko /tmp/initrd_ib/lib/modules/ib  
host1$ cp infiniband/core/rdma_ucm.ko /tmp/initrd_ib/lib/modules/ib  
host1$ cp net/mlx4/mlx4_core.ko /tmp/initrd_ib/lib/modules/ib  
host1$ cp infiniband/hw/mlx4/mlx4_ib.ko /tmp/initrd_ib/lib/modules/ib  
host1$ cp infiniband/hw/mthca/ib_mthca.ko /tmp/initrd_ib/lib/modules/ib  
host1$ cp infiniband/ulp/ipoib/ipoib_helper.ko  
/tmp/initrd_ib/lib/modules/ib  
host1$ cp infiniband/ulp/ipoib/ib_ipoib.ko /tmp/initrd_ib/lib/modules/ib
```

5. Load the IPv6 module. If you do not have it in your `initrd`, add it using the following command.

```
host1$ cp /lib/modules/`uname -r`/kernel/net/ipv6/ipv6.ko
/tmp/initrd_ib/lib/modules
```

6. Load the modules using the `insmod` executable. If you do not have it in your `initrd`, add it using the following command.

```
host1$ cp /sbin/insmod /tmp/initrd_ib/sbin/
```

7. **[Optional]** Give your IB device a static IP address.

```
host1$ cp /sbin/ifconfig /tmp/initrd_ib/sbin
```

8. **[Optional]** Obtain an IP address for the IB device through DHCP. Copy the DHCP client which was compiled specifically to support IB.

To continue with this step, DHCP client needs to be already installed on the machine you are working with.

Copy the DHCP client file and all the relevant files as described below.

```
host1# cp <path to DHCP client>/dhclient /tmp/initrd_ib/sbin
host1# cp <path to DHCP client>/dhclient-script /tmp/initrd_ib/sbin
host1# mkdir -p /tmp/initrd_ib/var/state/dhcp
host1# touch /tmp/initrd_ib/var/state/dhcp/dhclient.leases
host1# cp /bin/uname /tmp/initrd_ib/bin
host1# cp /usr/bin/expr /tmp/initrd_ib/bin
host1# cp /sbin/ifconfig /tmp/initrd_ib/bin
host1# cp /bin/hostname /tmp/initrd_ib/bin
```

9. Create a configuration file for the DHCP client and place it under `/tmp/initrd_ib/sbin`.

Example of the `dclient.conf`

```
# The value indicates a hexadecimal number
# For a ConnectX® device interface "ib0" {send dhcp-client-identifier
ff:00:00:00:00:00:02:00:00:02:c9:00:00:02:c9:03:00:00:10:39;
}
```

10. Add the commands for loading the copied modules into the file `init` at the point you wish the IB driver to be loaded.

Please pay attention to the following commands order (for loading modules) as it is critical.

Loading "`ipoib_helper.ko`" is not required for all OS kernels.

```
echo "loading ipv6"
/sbin/insmod /lib/modules/ipv6.ko echo "loading IB driver"
/sbin/insmod /lib/modules/ib/ib_addr.ko
/sbin/insmod /lib/modules/ib/ib_core.ko
/sbin/insmod /lib/modules/ib/ib_mad.ko
/sbin/insmod /lib/modules/ib/ib_sa.ko
/sbin/insmod /lib/modules/ib/ib_cm.ko
/sbin/insmod /lib/modules/ib/ib_uverbs.ko
/sbin/insmod /lib/modules/ib/ib_ucm.ko
/sbin/insmod /lib/modules/ib/ib_umad.ko
/sbin/insmod /lib/modules/ib/iw_cm.ko
/sbin/insmod /lib/modules/ib/rdma_cm.ko
/sbin/insmod /lib/modules/ib/rdma_ucm.ko
/sbin/insmod /lib/modules/ib/mlx4_core.ko
/sbin/insmod /lib/modules/ib/mlx4_ib.ko
/sbin/insmod /lib/modules/ib/ib_mthca.ko
```

In case of interoperability issues between iSCSI and Large Receive Offload (LRO), set the "ib\_ipoib.ko lro" to "0" to disable LRO.

```
/sbin/insmod /lib/modules/ib/ib_ipoib.ko lro=0
```

11. Assign an IP address to the IB device. Add either a call to `ifconfig` or to the DHCP client in the `init` file after loading the modules. If you want to use the DHCP client, then you need to add a call to the DHCP client in the `init` file after loading the IB modules.

For example:

```
/sbin/dhclient -cf /sbin/dhclient.conf ib1
```

12. Save the `init` file.

13. Close `initrd`.

```
host1$ cd /tmp/initrd_ib  
host1$ find ./ | cpio -H newc -o > /tmp/new_initrd_ib.img  
host1$ gzip /tmp/new_init_ib.img
```

14. Copy the modified `initrd` (including the IB driver) which is located at `/tmp/new_init_ib.img.gz` and rename it properly.

1. Back up your current `initrd` file.
2. Make a new working directory and change to it.
3. Extract the `initrd` image.
4. Create a directory for the ConnectX EN modules and copy them.
5. Load the modules using the `insmod` executable. If you do not have it in your `initrd`, add it using the following command.
6. Give your Ethernet device a static IP address.
7. Add the commands for loading the copied modules into the file `init` at the point you wish the Ethernet driver to be loaded.
8. Assign an IP address to the ConnectX EB network interface.
9. Save the `init` file.

10. Close `initrd`.

11. Copy the modified `initrd` (including the Ethernet driver) which is located at `/tmp/new_init_en.img.gz` and rename it properly.