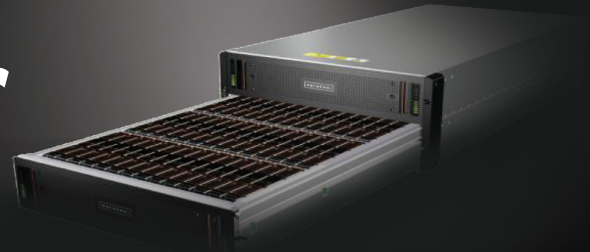


Your Premier Luster Partner

www.SuperDenseStorage.com



UNMATCHED SCALABILITY, DENSITY, & PERFORMANCE

Lustre is the most widely used open-source parallel file system. Together with Dell and Intel, Redapt can provide a complete Lustre solution that helps organizations leverage best-of-breed hardware, software, and services.

WHAT IS SDS?

SuperDense Storage (SDS) arrays validated and tunable **reference architectures** for Software Define Solutions. Deploy & scale large scale Lustre data environments with confidence! Our storage engineers are available to scope, design and deploy a Lustre solution customized to your requirements.

DENSITY	7U (Rack Units) 1 SDS + 2 Servers 1U
DRIVES	84 X 4TB (336TB raw)
DRIVES	84 x 6TB (5047B raw)

ADVANTAGES:

- Redapt Integration support
- DELL Enterprise Hardware
- High Capacity Redundant Configuration
- Storage Enterprise platform
- ZFS or Idiskfs File System
- Easy-to-use web GUI covering Lustre
> Deployment > Management > Monitoring
- Pooled Storage
- Capacity - A 256 zettabytes (2⁷⁸ bytes) OST size limit enables larger servers.
- Snapshots - Snapshot the lustre file system prior to maintenance.
- Compression - increases your total usable capacity.

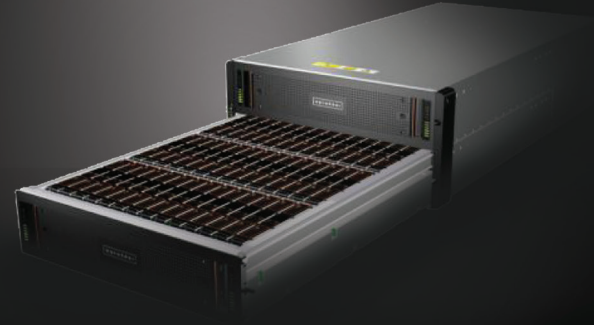
WHAT IS REDAPT?

Redapt is a full service systems integrator that delivers innovative data center infrastructure and cloud solutions tailored to meet your business goals. We develop and integrate customized, best-of-breed, technology solutions that effectively address the business objectives of our clients, while lowering TCO and providing maximum investment protection.



Your Premier Lustre Partner

www.SuperDenseStorage.com



BEST-OF-BREED PARTNERS

Dell SDS Storage system provides the Object Storage Target (OST) for two Object Storage Server (OSS) systems. Intel's Enterprise Edition for Lustre software offers a web interface for deployment, management, and monitoring of a cluster.

Red Hat / Centos operating system with ZFS or Ldiskfs file-system provides unmatched data integrity and scalability. DELL, Red Hat, and Intel offer Enterprise Support Services for all components through Redapt.

EXTREME-SCALE STORAGE FOR HIGH-PERFORMANCE COMPUTING (HPC) AND THE ENTERPRISE

Intel EE for lustre software provides simplified deployment, management, and monitoring services to the open-source Lustre file system to enable enterprise to support HPC and Big Data workloads with a high-performance parallel file system.

KEY FEATURES:

- ▮ Lustre version 2.5 foundation.
- ▮ POSIX compliant, parallel, distributed scale-out storage.
- ▮ Optimized storage for Hadoop apps.
- ▮ Simple but powerful UI lowers management complexity.
- ▮ Supports larger, more complex configurations.
- ▮ Hierarchical storage management infrastructure to support policy-driven, cost effective, tiered storage.

